



2012  
College-wide  
Directory

**EUGENE APPLEBAUM**

*College of Pharmacy and Health Sciences*

# Eugene Applebaum College of Pharmacy and Health Sciences 2011-12 College Directory

## **P. 1-2 Administrative Offices**

- ◆ Dean's Office
- ◆ Business Services
- ◆ Development
- ◆ Information Technology (IT)
- ◆ PharmMuseum
- ◆ Research
- ◆ Student and Alumni Affairs (SAA)
- ◆ Security

## **P. 3 Division of Laboratory Animal Resources (DLAR)**

## **P. 4-5 Fundamental and Applied Sciences (FAS)**

- ◆ Anatomic Pathologists' Assistant Program (APA)
- ◆ Clinical Laboratory Science (CLS)
- ◆ Mortuary Science (Mort Sci)
- ◆ Post-Bachelor Certificate in Forensic Investigation (PbCFI)

## **P. 6-10 Health Care Sciences (HCS)**

- ◆ Nurse Anesthesia (NA)
- ◆ Occupational and Environmental Health Sciences (OEHS)
- ◆ Occupational Therapy (OT)
- ◆ Physical Therapy (PT)
- ◆ Physician Assistant Studies (PAS)
- ◆ Radiation Therapy Technology (RTT)
- ◆ Radiologic Technology (RT)
- ◆ Radiologist Assistant Studies (RAS)

## **P. 11-12 Institute of Environmental Health Sciences (IEHS)**

## **P. 13 Learning Resource Center (LRC)**

## **P. 14-15 Pharmaceutical Sciences (PS)**

## **P. 16-17 Pharmacy Practice (PPR)**

## **P. 18-27 College-wide Alpha Directory**

## **P. 28-33 EACPHS Building Floor Plans**

- ◆ Commons
- ◆ 1st Floor
- ◆ 2nd Floor
- ◆ 3rd Floor
- ◆ 4th Floor
- ◆ 5th Floor

# Administrative Offices

<i>Last Name</i>	<i>First Name</i>	<i>Title</i>	<i>Department</i>	<i>Program</i>	<i>Phone Number</i>	<i>Office Number</i>	<i>Email Address</i>
------------------	-------------------	--------------	-------------------	----------------	---------------------	----------------------	----------------------

## *Dean's Office*

Asman	David C.	SECRETARY III	Dean's Office	Administration	313-577-1574	2620	<a href="mailto:ac5131@wayne.edu">ac5131@wayne.edu</a>
Christie	Susan	COORDINATOR III	Dean's Office	Administration	313-577-1709	2436	<a href="mailto:aa5387@wayne.edu">aa5387@wayne.edu</a>
Karas	Kathleen	INFORMATION OFFICER II	Dean's Office	Administration	313-577-2312	2631	<a href="mailto:ax8537@wayne.edu">ax8537@wayne.edu</a>
Normile	Howard	ASSOCIATE DEAN HEALTH SCIENCES	Dean's Office	Administration	313-577-7597	2627	<a href="mailto:ab4754@wayne.edu">ab4754@wayne.edu</a>
Sandlin	Heather	ACAD SRV OFF II - HEATLH SCIENCES	Dean's Office	Administration	313-577-5523	2612	<a href="mailto:au5979@wayne.edu">au5979@wayne.edu</a>
Slaughter	Richard	ASSOCIATE DEAN/Professor/Pharmacy	Dean's Office	Administration	313-577-8502	2629	<a href="mailto:aa4063@wayne.edu">aa4063@wayne.edu</a>
Upshaw	Eric	PROG RECORDS CLK SR	Dean's Office	Administration	313-993-6624	2620	<a href="mailto:af8230@wayne.edu">af8230@wayne.edu</a>
Watt	Tamra	ACAD SRV OFFICER II - PHARMACY	Dean's Office	Administration	313-577-4928	2610	<a href="mailto:eg6527@wayne.edu">eg6527@wayne.edu</a>
Young	Lloyd	DEAN	Dean's Office	Administration	313-577-1574	2625	<a href="mailto:eg1264@wayne.edu">eg1264@wayne.edu</a>

## *Office of Business Affairs and Human Resources*

Blumberg	Kathleen	Director	Dean's Office	Bus. Affairs	313-577-1578	2601	<a href="mailto:dx0229@wayne.edu">dx0229@wayne.edu</a>
Kimbrough	Tina	OFFICE SERVICE CLERK II	Dean's Office	Bus. Affairs	313-577-1576	2602	<a href="mailto:tinakimbrough@wayne.edu">tinakimbrough@wayne.edu</a>
Pruitt	Sherry	SECRETARY III	Dean's Office	Bus. Affairs/HR	313-577-1708	2604	<a href="mailto:spruitt@wayne.edu">spruitt@wayne.edu</a>
VACANT		ADMIN ASST II	Dean's Office	Bus. Affairs	313-577-5409	2602.1	
Wittenberg	Brian	ASSC DIRECTOR	Dean's Office	Bus. Affairs/HR	313-577-5413	2603	<a href="mailto:eu0615@wayne.edu">eu0615@wayne.edu</a>

## *Development*

Cusmano	Tiffany	DEVELOPMENT DIRECTOR	Dean's Office	Development	313-577-0273	2609	<a href="mailto:tcusmano@wayne.edu">tcusmano@wayne.edu</a>
Rivers	Cheryl	SECRETARY III	Dean's Office	Development	313-577-6478	2221	<a href="mailto:crivers@wayne.edu">crivers@wayne.edu</a>

## *Information Technology*

Carlson	Ryan	SYSTEMS INTEGRATOR I	Dean's Office	Information Technology	313-577-1230	4611	<a href="mailto:aj4592@wayne.edu">aj4592@wayne.edu</a>
Dortch	Nicole	APPLICATIONS SPECIALIST I	Dean's Office	Information Technology	313-577-8874	4623	<a href="mailto:ad2391@wayne.edu">ad2391@wayne.edu</a>
Farrell Azuta	Michele	ASSOCIATE DIRECTOR	Dean's Office	Information Technology	313-577-1171	4621	<a href="mailto:ai7076@wayne.edu">ai7076@wayne.edu</a>
Swift	Aaron	SYSTEMS ADMINISTRATOR II	Dean's Office	Information Technology	313-993-4607	4615	<a href="mailto:ah9091@wayne.edu">ah9091@wayne.edu</a>
VACANT	Vacant	PROFESSIONAL TECH	Dean's Office	Information Technology	313-577-1230	4617	

# Administrative Offices

<i>Last Name</i>	<i>First Name</i>	<i>Title</i>	<i>Department</i>	<i>Program</i>	<i>Phone Number</i>	<i>Office Number</i>	<i>Email Address</i>
------------------	-------------------	--------------	-------------------	----------------	---------------------	----------------------	----------------------

## *Other*

Bassett	David JP.	PROFESSOR	Dean's Office	Inhalation Facility Lab	313-577-1211/1424	5325	<a href="mailto:david.bassett@wayne.edu">david.bassett@wayne.edu</a>
Gao	Xiufeng	RESEARCH ASST	Dean's Office	Inhalation Facility Lab	313-577-1211	5325	<a href="mailto:aa0137@wayne.edu">aa0137@wayne.edu</a>

## *Research*

Bell	Sonia	GRANT ADMINISTRATOR	Dean's Office	Research	313-577-5341	2605	<a href="mailto:ah0597@wayne.edu">ah0597@wayne.edu</a>
Bhalla	Deepak K.	ASSOCIATE DEAN RESEARCH	Pharmaceutical Scienc	Pharmaceutical Sciences	313-577-3980	2621/3601	<a href="mailto:ad6268@wayne.edu">ad6268@wayne.edu</a>

## *Student and Alumni Affairs*

Brown	Faye	SECRETARY III	Dean's Office	Student & Alumni Affairs	313-577-1716/4814	1613	<a href="mailto:ad3274@wayne.edu">ad3274@wayne.edu</a>
Butt	Gwen	SECRETARY III	Dean's Office	Student & Alumni Affairs	313-577-1719	1611	<a href="mailto:ac7298@wayne.edu">ac7298@wayne.edu</a>
Clark	Mary	ASST DEAN	Dean's Office	Student & Alumni Affairs	313-577-5876	1637	<a href="mailto:ax9721@wayne.edu">ax9721@wayne.edu</a>
Ellis	R. Elaine	PROG RECORDS CLK SR	Dean's Office	Student & Alumni Affairs	313-577-2319	1615	<a href="mailto:ab9217@wayne.edu">ab9217@wayne.edu</a>
Fracassa	Moira	ACAD SRV OFF II	Dean's Office	Student & Alumni Affairs	313-577-8947	1631	<a href="mailto:aw9799@wayne.edu">aw9799@wayne.edu</a>
Koltuniak	Michael	ACAD SRV OFF I	Dean's Office	Student & Alumni Affairs	313-577-1286	1633	<a href="mailto:mkoltun@wayne.edu">mkoltun@wayne.edu</a>
Meier	Carol	ACAD SRV OFF III	Dean's Office	Student & Alumni Affairs	313-577-2320	1635	<a href="mailto:ac3771@wayne.edu">ac3771@wayne.edu</a>
Reevers	Shauna	ACAD SRV OFF II	Dean's Office	Student & Alumni Affairs	313-577-8599	1619	<a href="mailto:sreevers@wayne.edu">sreevers@wayne.edu</a>
Williams	Kaprice	ACAD SRV OFF I	Dean's Office	Student & Alumni Affairs	313-577-8715	1621	<a href="mailto:kaprice@wayne.edu">kaprice@wayne.edu</a>

## *Security*

Davis	Lynn	SECURITY	Dean's Office	WSU Public Safety	313-577-7737	: Floor Guard Stat	<a href="mailto:eo7457@wayne.edu">eo7457@wayne.edu</a>
Merriwether	James	SECURITY	Dean's Office	WSU Public Safety	313-577-7737	: Floor Guard Stat	<a href="mailto:cp8781@wayne.edu">cp8781@wayne.edu</a>
Tinsley	Stanley	SECURITY	Dean's Office	WSU Public Safety	313-577-7737	: Floor Guard Stat	<a href="mailto:ew9745@wayne.edu">ew9745@wayne.edu</a>

# ***Division of Laboratory Animal Resources (DLAR)***

<b><i>Last Name</i></b>	<b><i>First Name</i></b>	<b><i>Title</i></b>	<b><i>Department</i></b>	<b><i>Program</i></b>	<b><i>Phone Number</i></b>	<b><i>Office Number</i></b>	<b><i>Email Address</i></b>
-------------------------	--------------------------	---------------------	--------------------------	-----------------------	----------------------------	-----------------------------	-----------------------------

Foshey	Don	ADMIN ASST II	DLAR	DLAR	313-577-8303	5124	<a href="mailto:ac9784@wayne.edu">ac9784@wayne.edu</a>
Cotroneo	Tara	CLINICAL VETERINAIAN	DLAR	DLAR	313-577-1405	407 Scott Hall	<a href="mailto:et1135@wayne.edu">et1135@wayne.edu</a>

## ***Division Laboratory Animal Resources***

Ashcraft	Debra	SUPERVISOR II	DLAR	DLAR	313-577-5824	5611	<a href="mailto:d_ashcraft@wayne.edu">d_ashcraft@wayne.edu</a>
Brossia	Lisa	SR. DIRECTOR	DLAR	DLAR	313-993-6790	5603	<a href="mailto:lbrossia@wayne.edu">lbrossia@wayne.edu</a>
Dean-Christie	Karen	SR VETERINARY TECH	DLAR	DLAR	313-993-6738	5603	<a href="mailto:k.dean-christie@wayne.edu">k.dean-christie@wayne.edu</a>
Dibbley	Susan	VTP PROGRAM DIRECTOR	DLAR	DLAR	313-577-1156	5617	<a href="mailto:sdibbley@wayne.edu">sdibbley@wayne.edu</a>
Husinka	Kristina	SR VETERINARY TECH	DLAR	DLAR	313-577-1156	5617	<a href="mailto:khusinka@wayne.edu">khusinka@wayne.edu</a>
Kendra	Cathy	SUPERVISOR II	DLAR	DLAR	313-577-1452	5613	<a href="mailto:c.kendra@wayne.edu">c.kendra@wayne.edu</a>
Lane	Serene	LAB ANIMAL LEADER	DLAR	DLAR	313-577-1631	5625	<a href="mailto:ab4887@wayne.edu">ab4887@wayne.edu</a>
Rosenberger	Erika	PROCUREMENT SPECIALIST	DLAR	DLAR	313-577-1107	5116	<a href="mailto:eg4791@wayne.edu">eg4791@wayne.edu</a>
Ruemenapp	Tammy	SPECIALIST VETERINARY TECH	DLAR	DLAR	313-577-1156	517	<a href="mailto:truemenapp@wayne.edu">truemenapp@wayne.edu</a>
Walowicz	Linda	SR VETERINARY TECH	DLAR	DLAR	313-993-4005	5605	<a href="mailto:l.walowicz@wayne.edu">l.walowicz@wayne.edu</a>
Williams	Valerie	PROCUREMENT SPECIALIST	DLAR	DLAR	313-577-1107	5116	<a href="mailto:vwilla@wayne.edu">vwilla@wayne.edu</a>

# Fundamental and Applied Sciences

<i>Last Name</i>	<i>First Name</i>	<i>Title</i>	<i>Department</i>	<i>Program</i>	<i>Phone Number</i>	<i>Office Number</i>	<i>Email Address</i>
Brown	Janet M.	DIRECTOR/Asst Professor	Fundamental and Applied Sciences	Clinical Laboratory Science	313-577-5526	MS/5439 W	<a href="mailto:aa3663@wayne.edu">aa3663@wayne.edu</a>
Frade	Peter D.	CHAIR/PRO DIR/Asst Professor	Fundamental and Applied Sciences	Anatomic Pathologist Assistant	313-577-7874	MS/5439 W	<a href="mailto:ab8123@wayne.edu">ab8123@wayne.edu</a>
Ladd	E. David	DIRECTOR/ASST PROFESSOR-Clinical	Fundamental and Applied Sciences	Mortuary Science	313-577-1202	MS/5439 W	<a href="mailto:ae4559@wayne.edu">ae4559@wayne.edu</a>
Reynolds	Charlyce	ADMINISTRATIVE ASSISTANT	Fundamental and Applied Sciences	Fundamental and Applied Sciences	313-577-0952	MS/5439 W	<a href="mailto:creynolds@wayne.edu">creynolds@wayne.edu</a>
Knight	Anita	SECRETARY III	Fundamental and Applied Sciences	Fundamental and Applied Sciences	313-577-2050	MS/5439 W	<a href="mailto:aknight@wayne.edu">aknight@wayne.edu</a>
<b><i>Pathologists' Assistant</i></b>							
Apolloni	Karen	ASST PROFESSOR-Clinical	Fundamental and Applied Sciences	Pathologists' Assistant	313-577-2014	MS/5439 W	<a href="mailto:ae2586@wayne.edu">ae2586@wayne.edu</a>
Bentley	Gail	ADJUNCT FACULTY	Fundamental and Applied Sciences	Pathologists' Assistant	313-745-2553	Harper Hosp	<a href="mailto:ac7215@wayne.edu">ac7215@wayne.edu</a>
Pepper	Diane	PART-TIME FACULTY	Fundamental and Applied Sciences	Pathologists' Assistant	313-966-0575	Harper Hosp.	<a href="mailto:ai2603@wayne.edu">ai2603@wayne.edu</a>
Sherlitz	Trina	PART-TIME FACULTY	Fundamental and Applied Sciences	Pathologists' Assistant	313-577-2050	MS/5439 W	<a href="mailto:ak6899@wayne.edu">ak6899@wayne.edu</a>
Tracy-Bee	Mary	PART-TIME FACULTY	Fundamental and Applied Sciences	Pathologists' Assistant	313-577-2050	MS/5439 W	<a href="mailto:tracyma@udmercy.edu">tracyma@udmercy.edu</a>
Ziamba	Stamatina E.	PART-TIME FACULTY	Fundamental and Applied Sciences	Pathologists' Assistant	313-577-1993	326	<a href="mailto:tziamba@wayne.edu">tziamba@wayne.edu</a>
<b><i>Clinical Laboratory Science</i></b>							
Apolloni	Karen	ASST PROFESSOR-Clinical	Fundamental and Applied Sciences	Clinical Laboratory Science	313-577-2014	MS/5439 W	<a href="mailto:ae2586@wayne.edu">ae2586@wayne.edu</a>
Deutsch-Keahey	Diane D.	ASST PROFESSOR-Clinical	Fundamental and Applied Sciences	Clinical Laboratory Science	313-577-5898	MS/5439 W	<a href="mailto:dt7303@wayne.edu">dt7303@wayne.edu</a>
Krisher	Karen K.	ASSC PROFESSOR-Clinical	Fundamental and Applied Sciences	Clinical Laboratory Science	313-577-2050	MS/5439 W	<a href="mailto:karenkrisher@wayne.edu">karenkrisher@wayne.edu</a>
<b><i>Mortuary Science</i></b>							
Brogan	Shirley	PART-TIME FACULTY	Fundamental and Applied Sciences	Mortuary Science	313-577-2050	MS/5439 W	<a href="mailto:brogansa@wayne.edu">brogansa@wayne.edu</a>
Cameron	Jamye D.	PART-TIME FACULTY	Fundamental and Applied Sciences	Mortuary Science	313-577-2050	MS/5439 W	<a href="mailto:mortscidiva@wayne.edu">mortscidiva@wayne.edu</a>
Canine	John	PART-TIME FACULTY	Fundamental and Applied Sciences	Mortuary Science	313-577-2050	MS/5439 W	na
Gee	Sharon	PART-TIME FACULTY	Fundamental and Applied Sciences	Mortuary Science	313-577-2050	MS/5439 W	<a href="mailto:sgee@wayne.edu">sgee@wayne.edu</a>
Green	Debora	PART-TIME FACULTY	Fundamental and Applied Sciences	Mortuary Science	313-577-2050	MS/5439 W	<a href="mailto:aq5732@wayne.edu">aq5732@wayne.edu</a>
Husband	Roger	PART-TIME FACULTY	Fundamental and Applied Sciences	Mortuary Science	313-577-2050	MS/5439 W	<a href="mailto:ak1672@wayne.edu">ak1672@wayne.edu</a>
Wilk	Robert	PART-TIME FACULTY	Fundamental and Applied Sciences	Mortuary Science	313-577-2050	MS/5439 W	<a href="mailto:wilkraw@gmail.com">wilkraw@gmail.com</a>
Will	Robert	PART-TIME FACULTY	Fundamental and Applied Sciences	Mortuary Science	313-577-2050	MS/5432 W	<a href="mailto:ae5345@wayne.edu">ae5345@wayne.edu</a>

# ***Fundamental and Applied Sciences***

<b><i>Last Name</i></b>	<b><i>First Name</i></b>	<b><i>Title</i></b>	<b><i>Department</i></b>	<b><i>Program</i></b>	<b><i>Phone Number</i></b>	<b><i>Office Number</i></b>	<b><i>Email Address</i></b>
<b><i>Post-Bachelor Certificate in Forensic Investigation</i></b>							
Sojda	Brett	PART-TIME FACULTY	Fundamental and Applied Sciences	Post-Bach Cert in Forensic Inv	313-577-2050	MS/5439 W	<a href="mailto:ai9072@wayne.edu">ai9072@wayne.edu</a>
Spitz	Daniel	ADJUNCT FACULTY	Fundamental and Applied Sciences	Post-Bach Cert in Forensic Inv	313-577-2050	MS/5439 W	<a href="mailto:danspitz@aol.com">danspitz@aol.com</a>
Taffe	Bonita	ASSISTANT/Non-Instr	Fundamental and Applied Sciences	Post-Bach Cert in Forensic Inv	313-577-2050	MS/5439 W	<a href="mailto:aa1009@wayne.edu">aa1009@wayne.edu</a>

# Health Care Sciences

<i>Last Name</i>	<i>First Name</i>	<i>Title</i>	<i>Department</i>	<i>Program</i>	<i>Phone Number</i>	<i>Office Number</i>	<i>Email Address</i>
Head	Doreen Y.	INTERIM CHAIR/ Director/Assc Professor-Clinical	Health Care Sciences	Occupational Therapy	313-577-5884	2226	<a href="mailto:ad8560@wayne.edu">ad8560@wayne.edu</a>
Dayton	Barb	SECRETARY III	Health Care Sciences	Health Care Sciences	313-577-1369	2590	<a href="mailto:ac2605@wayne.edu">ac2605@wayne.edu</a>
Moore	Marilyn	ADMINISTRATIVE ASSISTANT I	Health Care Sciences	Health Care Sciences	313-577-3442	2211	<a href="mailto:ad4844@wayne.edu">ad4844@wayne.edu</a>
Schueler	Caterina	SECRETARY III	Health Care Sciences	Health Care Sciences	313-577-1436	2248	<a href="mailto:caterina.schueler@wayne.edu">caterina.schueler@wayne.edu</a>
Vacant		SECRETARY IV	Health Care Sciences	Health Care Sciences	313-577-1436	2248	na

## *Nurse Anesthesia*

Golinski	Mary	ASST PROFESSOR-Clinical	Health Care Sciences	Nurse Anesthesia	313-745-4956	2T DRH Annx	<a href="mailto:ab8372@wayne.edu">ab8372@wayne.edu</a>
Haglund	Valdor	ASST PROFESSOR-Clin	Health Care Sciences	Nurse Anesthesia	313-996-0034	2V DRH	<a href="mailto:ab1181@wayne.edu">ab1181@wayne.edu</a>
Mangahas	Phil	INSTRUCTOR-NR	Health Care Sciences	Nurse Anesthesia	313-966-0658	2V DRH	<a href="mailto:ad4553@wayne.edu">ad4553@wayne.edu</a>
Walczyk	Mary	INSTRUCTOR-NR	Health Care Sciences	Nurse Anesthesia	313-993-7824	2V DRH	<a href="mailto:ac6415@wayne.edu">ac6415@wayne.edu</a>
Worth	Prudentia	DIRECTOR/Asst Professor-Clin	Health Care Sciences	Nurse Anesthesia	313-993-7168	4605	<a href="mailto:aa1635@wayne.edu">aa1635@wayne.edu</a>

## *Occupational and Environmental Health Sciences*

Casaletta	Anthony	PART-TIME FACULTY	Health Care Sciences	Occupational Envl Health Sci	248-888-8867	na	<a href="mailto:ag5176@wayne.edu">ag5176@wayne.edu</a>
Chioco	Ernest P.	ADJ FACULTY	Health Care Sciences	Occupational Envl Health Sci	586-746-1761	na	<a href="mailto:echiodo@pol.net">echiodo@pol.net</a>
Joseph	Bradley S.	PART-TIME FACULTY	Health Care Sciences	Occupational Env Health Sci	313-577-1551	na	<a href="mailto:aa3509@wayne.edu">aa3509@wayne.edu</a>
Kerfoot	Edward	DIRECTOR/ASSC PROFESSOR	Health Care Sciences	Occupational Env Health Sci	313-577-1210	5148	<a href="mailto:ab4642@wayne.edu">ab4642@wayne.edu</a>
Maser	Daniel C.	PART-TIME FACULTY	Health Care Sciences	Occupational Env Health Sci	586-840-3230	na	<a href="mailto:dmaser@askenviroair.com">dmaser@askenviroair.com</a>
Mingela	Sarunas	ASSC PROFESSOR-Clinical	Health Care Sciences	Occupational Envl Health Sci	313-577-1714	5152	<a href="mailto:rsmingela@wayne.edu">rsmingela@wayne.edu</a>
Ostrowski	Cynthia A.	ASST PROFESSOR-Clinical	Health Care Sciences	Occupational Env Health Sci	313-577-1210	5138	<a href="mailto:dq1462@wayne.edu">dq1462@wayne.edu</a>
Paul	Stephen	PART-TIME FACULTY	Health Care Sciences	Occupational Env Health Sci	586-840-3230	na	<a href="mailto:spaul@askenviroair.com">spaul@askenviroair.com</a>
Pawlowski	Robert M.	ASST PROFESSOR-Clinical	Health Care Sciences	Occupational Env Health Sci	313-577-3860	5136	<a href="mailto:ds2688@wayne.edu">ds2688@wayne.edu</a>
Reeves	Andrew	EMERITUS PROFESSOR	Health Care Sciences	Occupational Env Health Sci	313-822-4651	na	<a href="mailto:andrew.reeves@wayne.edu">andrew.reeves@wayne.edu</a>
Schenk	Thomas	PART-TIME FACULTY	Health Care Sciences	Occupational Env Health Sci	313-577-1369	na	na

# Health Care Sciences

<i>Last Name</i>	<i>First Name</i>	<i>Title</i>	<i>Department</i>	<i>Program</i>	<i>Phone Number</i>	<i>Office Number</i>	<i>Email Address</i>
------------------	-------------------	--------------	-------------------	----------------	---------------------	----------------------	----------------------

## *Occupational and Environmental Health Sciences (continued)*

Srinivasan	Mahaleakshmi	PART-TIME FACULTY	Health Care Sciences	Occupational Env Health Sci	313-577-0019	5425 Woodward, 300	<a href="mailto:msriniva@wayne.edu">msriniva@wayne.edu</a>
Thiel	Douglas	PART-TIME FACULTY	Health Care Sciences	Occupational Envl Health Sci	734-324-6208	na	<a href="mailto:df5069@wayne.edu">df5069@wayne.edu</a>
Wabeke	Roger	PART-TIME FACULTY	Health Care Sciences	Occupational Env Health Sci	313-577-6866	na	<a href="mailto:wabeker@wayne.edu">wabeker@wayne.edu</a>
Warner	Peter	ADJ FACULTY	Health Care Sciences	Occupational Envl Health Sci	313-993-6949	5134	<a href="mailto:aa4631@wayne.edu">aa4631@wayne.edu</a>
Watt	William D.	ASSOC PROFESSOR-Clinical	Health Care Sciences	Occupational Env Health Sci	313-577-4475	5144	<a href="mailto:ab5746@wayne.edu">ab5746@wayne.edu</a>
Zein	Maya A.	GRADUATE ASST	Health Care Science	Occupational Env Health Sci	313-577-6573	5142	<a href="mailto:ay3438@wayne.edu">ay3438@wayne.edu</a>

## *Occupational Therapy*

Case	Donna	ASSISTANT/Non-Instr	Health Care Sciences	Occupational Therapy	na	na	<a href="mailto:ad0121@wayne.edu">ad0121@wayne.edu</a>
Conti	Gerry E.	ASST PROFESSOR	Health Care Sciences	Occupational Therapy	313-577-2188	2204	<a href="mailto:ak3113@wayne.edu">ak3113@wayne.edu</a>
DiZazzo-Miller	Rosanne	ASST PROFESSOR-Clinical	Health Care Sciences	Occupational Therapy	313-993-3970	2224	<a href="mailto:ar7975@wayne.edu">ar7975@wayne.edu</a>
Head	Doreen Y.	DIRECTOR/Assc Professor-Clinical	Health Care Sciences	Occupational Therapy	313-577-5884	2226	<a href="mailto:ad8560@wayne.edu">ad8560@wayne.edu</a>
Koziatek	Susan	PART-TIME FACULTY	Health Care Sciences	Occupational Therapy	313-577-5879	2207	<a href="mailto:suekoziatok@wayne.edu">suekoziatok@wayne.edu</a>
Lacey	Krim	RESEARCH ASSC	Health Care Sciences	Occupational Therapy	313-577-2647	2224	<a href="mailto:ab2740@wayne.edu">ab2740@wayne.edu</a>
Lysack	Cathy	PROFESSOR	Health Care Sciences	Occupational Therapy	313-577-2297	2202/231 Knapp Bldg	<a href="mailto:c.lysack@wayne.edu">c.lysack@wayne.edu</a>
Milligan	Nancy Vandewiele	ASST PROFESSOR	Health Care Sciences	Occupational Therapy	313-577-5883	2220	<a href="mailto:nancyv-m@wayne.edu">nancyv-m@wayne.edu</a>
Parnell	Regina N.	ASST PROFESSOR-Clinical	Health Care Sciences	Occupational Therapy	313-577-6794	2208	<a href="mailto:ad9049@wayne.edu">ad9049@wayne.edu</a>
Samuel	Preethy	ASST PROFESSOR	Health Care Sciences	Occupational Therapy	313-577-5880	2210	<a href="mailto:preethy@wayne.edu">preethy@wayne.edu</a>
Savich	Tatjana Tina	PART-TIME FACULTY	Health Care Sciences	Occupational Therapy	313-577-1435	2207	<a href="mailto:ttsavich@wayne.edu">ttsavich@wayne.edu</a>

## *Physical Therapy*

Adamo	Diane	ASST PROFESSOR	Health Care Sciences	Physical Therapy	313-577-5625	2314	<a href="mailto:ac9176@wayne.edu">ac9176@wayne.edu</a>
Arena	Sara K.	INSTR ASST	Health Care Sciences	Physical Therapy	313-577-1435	2221	<a href="mailto:sarena@wayne.edu">sarena@wayne.edu</a>
Bee	Mary	PART-TIME FACULTY	Health Care Sciences	Physical Therapy	313-577-1432	2248	<a href="mailto:ad1755@wayne.edu">ad1755@wayne.edu</a>
Birk	Thomas J.	ASSC PROFESSOR	Health Care Sciences	Physical Therapy	313-577-5664	2590	<a href="mailto:ae7647@wayne.edu">ae7647@wayne.edu</a>

# Health Care Sciences

<i>Last Name</i>	<i>First Name</i>	<i>Title</i>	<i>Department</i>	<i>Program</i>	<i>Phone Number</i>	<i>Office Number</i>	<i>Email Address</i>
<i>Physical Therapy (continued)</i>							
Brown	Cynthia	PART-TIME FACULTY	Health Care Sciences	Physical Therapy	313-577-1432	2248	<a href="mailto:ai4192@wayne.edu">ai4192@wayne.edu</a>
Childers	Amy	PART-TIME FACULTY	Health Care Sciences	Physical Therapy	313-577-1432	2248	<a href="mailto:af9560@wayne.edu">af9560@wayne.edu</a>
DeMeulemeester	Erik P.	INSTR ASST	Health Care Sciences	Physical Therapy	313-577-1432	2248	<a href="mailto:co5608@wayne.edu">co5608@wayne.edu</a>
Dunleavy	Kim	ASST PROFESSOR-Clin	Health Care Sciences	Physical Therapy	313-577-5630	2324	<a href="mailto:ad6611@wayne.edu">ad6611@wayne.edu</a>
Ferrera	Tanya	PART-TIME FACULTY	Health Care Sciences	Physical Therapy	313-577-1432	2248	<a href="mailto:tanyaferrera@gmail.com">tanyaferrera@gmail.com</a>
Firby	Robin	PART-TIME FACULTY	Health Care Sciences	Physical Therapy	313-577-1436	2248	<a href="mailto:rfirby@wayne.edu">rfirby@wayne.edu</a>
Fleck	Tracey M.	INSTR ASST	Health Care Sciences	Physical Therapy	313-577-1432	2249	<a href="mailto:traceyfleck@wayne.edu">traceyfleck@wayne.edu</a>
George	Rajiv	RESEARCH ASSISTANT	Health Care Sciences	Physical Therapy	313-577-1432	2248	<a href="mailto:du0644@wayne.edu">du0644@wayne.edu</a>
Giampuzzi	Cristina A.	INSTR ASST	Health Care Sciences	Physical Therapy	313-577-4643	2221	<a href="mailto:ag5095@wayne.edu">ag5095@wayne.edu</a>
Goldberg	Allon	ASST PROFESSOR	Health Care Sciences	Physical Therapy	313-577-8608	1210	<a href="mailto:ae0283@wayne.edu">ae0283@wayne.edu</a>
Kovacek	Jake Jakubiak	PART-TIME FACULTY	Health Care Sciences	Physical Therapy	313-577-1432	2248	<a href="mailto:aw4567@wayne.edu">aw4567@wayne.edu</a>
Krauss	John	PART-TIME FACULTY	Health Care Sciences	Physical Therapy	313-577-1432	2248	<a href="mailto:bb0658@wayne.edu">bb0658@wayne.edu</a>
Larson	Cathy	PART-TIME FACULTY	Health Care Science	Physical Therapy	313-577-1436	2248	<a href="mailto:eb9976@wayne.edu">eb9976@wayne.edu</a>
Love-Slater	Valeri R.	INSTR ASST	Health Care Sciences	Physical Therapy	313-577-1432	2221	<a href="mailto:ak7519@wayne.edu">ak7519@wayne.edu</a>
Malek	Moh	ASSC PROFESSOR	Health Care Sciences	Physical Therapy	313-577-0435	2248	<a href="mailto:en7488@wayne.edu">en7488@wayne.edu</a>
Montante	James	PART-TIME FACULTY	Health Care Sciences	Physical Therapy	313-577-1432	2248	<a href="mailto:ad3543@wayne.edu">ad3543@wayne.edu</a>
Moul	Andrew F.	INSTR ASST	Health Care Sciences	Physical Therapy	313-577-1432	2221	<a href="mailto:amosz@wayne.edu">amosz@wayne.edu</a>
Nettie	Jon	PART-TIME FACULTY	Health Care Sciences	Physical Therapy	313-577-1432	2248	<a href="mailto:bb7679@wayne.edu">bb7679@wayne.edu</a>
Olejniczak	Carolyn A.	INSTR ASST	Health Care Sciences	Physical Therapy	313-577-1436	2221	<a href="mailto:ap0173@wayne.edu">ap0173@wayne.edu</a>
Palazzolo	Katherine	PART-TIME FACULTY	Health Care Science	Physical Therapy	313-577-1436	2248	<a href="mailto:katherine_palazzolo@wayne.edu">katherine_palazzolo@wayne.edu</a>
Pardo	Victoria M.	ASST PROFESSOR-Clinical	Health Care Sciences	Physical Therapy	313-577-9166	2254	<a href="mailto:av6281@wayne.edu">av6281@wayne.edu</a>
Patzer	Diane E.	INSTR ASST	Health Care Sciences	Physical Therapy	313-577-1436	2221	<a href="mailto:af1672@wayne.edu">af1672@wayne.edu</a>
Pociask	Fredrick	ASST PROFESSOR-Clinical	Health Care Sciences	Physical Therapy	313-577-1433	2320	<a href="mailto:ad8585@wayne.edu">ad8585@wayne.edu</a>
Reid	Kristina R.	INSTRUCTOR-Clinical	Health Care Sciences	Physical Therapy	313-577-0693	2250	<a href="mailto:ai6795@wayne.edu">ai6795@wayne.edu</a>

# Health Care Sciences

<i>Last Name</i>	<i>First Name</i>	<i>Title</i>	<i>Department</i>	<i>Program</i>	<i>Phone Number</i>	<i>Office Number</i>	<i>Email Address</i>
------------------	-------------------	--------------	-------------------	----------------	---------------------	----------------------	----------------------

## *Physical Therapy (continued)*

Schellhaass-Krause	Heike	PART-TIME FACULTY	Health Care Sciences	Physical Therapy	313-577-1432	2248	<a href="mailto:dx6872@wayne.edu">dx6872@wayne.edu</a>
Schiller	Martha	ASST PROFESSOR-Clinical	Health Care Sciences	Physical Therapy	313-577-1724	2250	<a href="mailto:aa1712@wayne.edu">aa1712@wayne.edu</a>
Talley	Susan	DIRECTOR	Health Care Sciences	Physical Therapy	313-577-4643	2246	<a href="mailto:ac1563@wayne.edu">ac1563@wayne.edu</a>
Tolin	Liyongo	PART-TIME FACULTY	Health Care Sciences	Physical Therapy	313-577-1432	2248	<a href="mailto:ad4082@wayne.edu">ad4082@wayne.edu</a>
Walters	Gwen	PART-TIME FACULTY	Health Care Sciences	Physical Therapy	313-577-1432	2248	<a href="mailto:ey7960@wayne.edu">ey7960@wayne.edu</a>
Wilson	Christopher	PART-TIME FACULTY	Health Care Sciences	Physical Therapy	313-577-1432	2248	<a href="mailto:ei9435@wayne.edu">ei9435@wayne.edu</a>
Yoder	Kathryn	PART-TIME FACULTY	Health Care Sciences	Physical Therapy	313-577-5586	2248	<a href="mailto:ey7858@wayne.edu">ey7858@wayne.edu</a>

## *Physician Assistant Studies*

Bee	Mary	PART-TIME FACULTY	Health Care Sciences	Physician Assistant Studies	313-577-2050/1368	2590	<a href="mailto:ad1755@wayne.edu">ad1755@wayne.edu</a>
Catalano	Carol	INSTRUCTOR-Clin	Health Care Sciences	Physician Assistant Studies	313-577-4635	2530	<a href="mailto:ag6524@wayne.edu">ag6524@wayne.edu</a>
Geitzen	Lindsay	ASST PROFESSOR-Clinical	Health Care Sciences	Physician Assistant Studies	313-577-4653	2554	<a href="mailto:av6457@wayne.edu">av6457@wayne.edu</a>
Geltz	Kevin M.	ASST PROFESSOR-Clin/Clin Coo	Health Care Sciences	Physician Assistant Studies	313-993-4052	2556	<a href="mailto:ao3255@wayne.edu">ao3255@wayne.edu</a>
Gilkey	Stephanie	DIRECTOR/Asst Professor-Clin	Health Care Sciences	Physician Assistant Studies	313-577-9666	2540	<a href="mailto:ab4703@wayne.edu">ab4703@wayne.edu</a>
McGinnity	John G.	ASSC PROFESSOR-Clinical	Health Care Sciences	Physician Assistant Studies	313-577-3707	2532	<a href="mailto:ac8556@wayne.edu">ac8556@wayne.edu</a>
Nelson	Lisa	INSTR ASST	Health Care Sciences	Physician Assistant Studies	313-577-4625	2550	<a href="mailto:ao7363@wayne.edu">ao7363@wayne.edu</a>
Pokorski	Phillip L.	ASST PROFESSOR-Clinical	Health Care Sciences	Physician Assistant Studies	313-577-0015	2116	<a href="mailto:aa9410@wayne.edu">aa9410@wayne.edu</a>
Schmeltz	Susan	ASST PROFESSOR-Clinical	Health Care Sciences	Physician Assistant Studies	313-577-7661	2542	<a href="mailto:eg5862@wayne.edu">eg5862@wayne.edu</a>
Siddique	Mohamed	MEDICAL DIRECTOR	Health Care Sciences	Physician Assistant Studies	313-5771368	2590	<a href="mailto:aa1446@wayne.edu">aa1446@wayne.edu</a>
Wimmer	Michael	PART-TIME FACULTY	Health Care Sciences	Physician Assistant Studies	313-577-1368	2590	<a href="mailto:ac6046@wayne.edu">ac6046@wayne.edu</a>

## *Radiation Therapy Technology*

Frederick	Kurt	CLINICAL ED COORD	Health Care Sciences	Radiation Therapy Technology	313-577-0385	2240	<a href="mailto:kurtfrederick@wayne.edu">kurtfrederick@wayne.edu</a>
Keller	Rosann B.	ASST PROFESSOR-Clinical	Health Care Sciences	Radiation Therapy Technology	313-577-5711	1130.1	<a href="mailto:kellerr@wayne.edu">kellerr@wayne.edu</a>
Kempa	Adam	DIRECTOR	Health Care Sciences	Radiation Therapy Technology	313-577-5710	1130.2	<a href="mailto:aa1156@wayne.edu">aa1156@wayne.edu</a>

# Health Care Sciences

<i>Last Name</i>	<i>First Name</i>	<i>Title</i>	<i>Department</i>	<i>Program</i>	<i>Phone Number</i>	<i>Office Number</i>	<i>Email Address</i>
<b><i>Radiologic Technology</i></b>							
Kath	Kathy	DIRECTOR	Health Care Sciences	Radiologic Technology	313-916-1348	1130.3	<a href="mailto:bb1524@wayne.edu">bb1524@wayne.edu</a>
Borland	Sarah	PART-TIME FACULTY	Health Care Sciences	Radiologic Technology	313-577-1432	1130.3	<a href="mailto:dx9339@wayne.edu">dx9339@wayne.edu</a>
<b><i>Radiologist Assistant Studies</i></b>							
Burke	Matthew	Radiology	Health Care Sciences	Radiologist Asst Studies Prog	313-916-2007	Henry Ford Hosp	na
Collins	Denise	VICE CHAIR, Radiology	Health Care Sciences	Radiologist Asst Studies Prog	313-916-8429	Henry Ford Hosp	na
Croteau	Daniel	DIV HEAD INTERV Radiology	Health Care Sciences	Radiologist Asst Studies Prog	313-916-1363	Henry Ford Hosp	na
Hunt	Cindy	PA-C INTERV Radiology	Health Care Sciences	Radiologist Asst Studies Prog	313-916-5308	Henry Ford Hosp	<a href="mailto:aj0760@wayne.edu">aj0760@wayne.edu</a>
Kath	Kathy	DIRECTOR	Health Care Sciences	Radiologic Technology	313-916-1348	1130.3	<a href="mailto:bb1524@wayne.edu">bb1524@wayne.edu</a>
Peck	Donald	DIV HEAD/Radiology	Health Care Sciences	Radiologist Asst Studies Prog	313-916-3344	Henry Ford Hosp	<a href="mailto:ap4715@wayne.edu">ap4715@wayne.edu</a>
Porter	William	NUCLEAR MEDICINE	Health Care Sciences	Radiologist Asst Studies Prog	313-916-1696	Henry Ford Hosp	na
Sanders	William	VICE CHAIR, Radiology	Health Care Sciences	Radiologist Asst Studies Prog	313-916-4488	Henry Ford Hosp	na
Sturza	Scott	RADIOLOGIST	Health Care Sciences	Radiologist Asst Studies Prog	313-916-1363	Henry Ford Hosp	<a href="mailto:ssturza@wayne.edu">ssturza@wayne.edu</a>

# Institute of Environmental Health Sciences

<i>Last Name</i>	<i>First Name</i>	<i>Title</i>	<i>Department</i>	<i>Program</i>	<i>Phone Number</i>	<i>Office Number</i>	<i>Email Address</i>
Bhoopalan	Vanita	RESEARCH ASST	Inst. Of Envir. Health Sciences	Inst. Of Envir. Health Sciences	313-577-5507	5333	<a href="mailto:dy8663@wayne.edu">dy8663@wayne.edu</a>
Burger	Benjamin	RESEARCH ASST	Inst. of Envir. Health Sciences	Inst. of Envir. Health Sciences	313-577-5618	5333	<a href="mailto:ec1580@wayne.edu">ec1580@wayne.edu</a>
Burns	Lakisha	ADMIN ASST I	Inst. Of Envir. Health Sciences	Inst. Of Envir. Health Sciences	313-577-0100	5135	<a href="mailto:eb3788@wayne.edu">eb3788@wayne.edu</a>
Caruso	Joseph	ASST PROFESSOR	Inst. Of Envir. Health Sciences	Inst. Of Envir. Health Sciences	313-577-6542	2105 Scott Hall	<a href="mailto:af7507@wayne.edu">af7507@wayne.edu</a>
Chopra	Dharam	PROFESSOR	Inst. Of Envir. Health Sciences	Inst. Of Envir. Health Sciences	313-577-5585	4516	<a href="mailto:d.chopra@wayne.edu">d.chopra@wayne.edu</a>
Dereski	Mary	ASSC PROFESSOR	Inst. Of Envir. Health Sciences	Inst. Of Envir. Health Sciences	313-577-5597	4116	<a href="mailto:m.dereski@wayne.edu">m.dereski@wayne.edu</a>
Duniec-Dmuchowski	Zofia	RESEARCH ASST	Inst. Of Envir. Health Sciences	Inst. Of Envir. Health Sciences	313-577-5570	4240	<a href="mailto:aa2982@wayne.edu">aa2982@wayne.edu</a>
Fang	Hai-Lin	RESEARCH ASSC	Inst. Of Envir. Health Sciences	Inst. Of Envir. Health Sciences	313-577-5571	4240	<a href="mailto:hlfang@wayne.edu">hlfang@wayne.edu</a>
Gargano	Mary	RESEARCH ASST	Inst. Of Envir. Health Sciences	Inst. Of Envir. Health Sciences	313-577-5521	4250	<a href="mailto:ae4865@wayne.edu">ae4865@wayne.edu</a>
Ho	Ye-Shih	PROFESSOR	Inst. Of Envir. Health Sciences	Inst. Of Envir. Health Sciences	313-577-6574	5230.4	<a href="mailto:yho@wayne.edu">yho@wayne.edu</a>
Hudder	Alice	ASST PROFESSOR	Inst. Of Envir. Health Sciences	Inst. Of Envir. Health Sciences	313-577-6578	5230.5	<a href="mailto:alice.hudder@wayne.edu">alice.hudder@wayne.edu</a>
Kocarek	Thomas	ASSC PROFESSOR	Inst. Of Envir. Health Sciences	Inst. Of Envir. Health Sciences	313-577-6580	4512	<a href="mailto:t.kocarek@wayne.edu">t.kocarek@wayne.edu</a>
Lowery	LaQuita	BUSSINESS MANAGER	Inst. Of Envir. Health Sciences	Inst. Of Envir. Health Sciences	313-577-6590	5139	<a href="mailto:ah3942@wayne.edu">ah3942@wayne.edu</a>
Lu	Xiangyi	ASSC PROFESSOR	Inst. Of Envir. Health Sciences	Inst. Of Envir. Health Sciences	313-577-5538	5230.1	<a href="mailto:xlu@wayne.edu">xlu@wayne.edu</a>
Mathieu	Patricia	RESEARCH ASST	Inst. Of Envir. Health Sciences	Inst. Of Envir. Health Sciences	313-577-5505	4230	<a href="mailto:p.mathieu@wayne.edu">p.mathieu@wayne.edu</a>
Pang	Haiyan	RESEARCH ASST	Inst. Of Envir. Health Sciences	Inst. Of Envir. Health Sciences	313-577-5571	4240	<a href="mailto:ay@5012@wayne.edu">ay@5012@wayne.edu</a>
Pant	Asmita	GRADUATE STUDENT	Inst. Of Envir. Health Sciences	Inst. Of Envir. Health Sciences	313-577-6576	5240	<a href="mailto:ej1384@wayne.edu">ej1384@wayne.edu</a>
Raglin	Erica	RESEARCH ASST	Inst. Of Envir. Health Sciences	Inst. Of Envir. Health Sciences	313-577-5043	5141	<a href="mailto:ab4083@wayne.edu">ab4083@wayne.edu</a>
Reiners	John J.	PROFESSOR	Inst. Of Envir. Health Sciences	Inst. Of Envir. Health Sciences	313-577-5594	4114	<a href="mailto:john.reiners.ir@wayne.edu">john.reiners.ir@wayne.edu</a>
Reinheimer	Karrin	RESEARCH ASST	Inst. Of Envir. Health Sciences	Inst. Of Envir. Health Sciences	313-577-5628	5141	<a href="mailto:ey1717@wayne.edu">ey1717@wayne.edu</a>
Ruden	Douglas	ASSC PROFESSOR	Inst. Of Envir. Health Sciences	Inst. Of Envir. Health Sciences	313-577-5614	2 CS Mott Ctr	<a href="mailto:douglasr@wayne.edu">douglasr@wayne.edu</a>
Runge-Morris	Melissa	INTERIM-DIRECTOR	Inst. Of Envir. Health Sciences	Inst. Of Envir. Health Sciences	313-577-5598	4118	<a href="mailto:m.runge-morris@wayne.edu">m.runge-morris@wayne.edu</a>
Sen	Arko	GRADUATE STUDENT	Inst. Of Envir. Health Sciences	Inst. Of Envir. Health Sciences	313-577-6545	2105 Scott Hall	<a href="mailto:es3195@wayne.edu">es3195@wayne.edu</a>
Shin	Nahmee	RESEARCH ASST	Inst. Of Envir. Health Sciences	Inst. Of Envir. Health Sciences	313-577-6546	2105 Scott Hall	<a href="mailto:av3631@wayne.edu">av3631@wayne.edu</a>
Stemmer	Paul	ASSC PROFESSOR	Inst. Of Envir. Health Sciences	Inst. Of Envir. Health Sciences	313-577-6536	2105 Scott Hall	<a href="mailto:ak5245@wayne.edu">ak5245@wayne.edu</a>
Thomas	Geneice	RESEARCH ASST	Inst. Of Envir. Health Sciences	Inst. Of Envir. Health Sciences	313-577-5618	5333	<a href="mailto:av4196@wayne.edu">av4196@wayne.edu</a>
Wang	Gan	ASSC PROFESSOR	Inst. Of Envir. Health Sciences	Inst. Of Envir. Health Sciences	313-577-5583	4514	<a href="mailto:g.wang@wayne.edu">g.wang@wayne.edu</a>

# ***Institute of Environmental Health Sciences***

<b><i>Last Name</i></b>	<b><i>First Name</i></b>	<b><i>Title</i></b>	<b><i>Department</i></b>	<b><i>Program</i></b>	<b><i>Phone Number</i></b>	<b><i>Office Number</i></b>	<b><i>Email Address</i></b>
Wang	Luan	GRADUATE STUDENT	Inst. Of Envir. Health Sciences	Inst. Of Envir. Health Sciences	313-577-5614	8 CS Mott Ctr	<a href="mailto:du1484@wayne.edu">du1484@wayne.edu</a>
Yang	Yuqin	GRADUATE STUDENT	Inst. Of Envir. Health Sciences	Inst. Of Envir. Health Sciences	313-577-5570	4240	<a href="mailto:er8827@wayne.edu">er8827@wayne.edu</a>

# Learning Resource Center

<i>Last Name</i>	<i>First Name</i>	<i>Title</i>	<i>Department</i>	<i>Program</i>	<i>Phone Number</i>	<i>Office Number</i>	<i>Email Address</i>
Douglas	Ramona	LIBRARY ASSIST II	Learning Resource Center	Learning Resource Center	313-577-1279	LRC	<a href="mailto:aa7921@wayne.edu">aa7921@wayne.edu</a>
LaPorte	Rachelle	LIBRARY CLERK-Sr.	Learning Resource Center	Learning Resource Center	313-577-1279	LRC	<a href="mailto:ay0552@wayne.edu">ay0552@wayne.edu</a>
Wu	Wendy	LIBRARIAN III	Learning Resource Center	Learning Resource Center	313-577-0586	Shiffman Library	<a href="mailto:wendywu@med.wayne.edu">wendywu@med.wayne.edu</a>

# Pharmaceutical Sciences

<i>Last Name</i>	<i>First Name</i>	<i>Title</i>	<i>Department</i>	<i>Program</i>	<i>Phone Number</i>	<i>Office Number</i>	<i>Email Address</i>
Corcoran	George B.	DEPT CHAIR/Professor	Pharmaceutical Sciences	Pharmaceutical Sciences	313-577-1737	3615	<a href="mailto:aa0991@wayne.edu">aa0991@wayne.edu</a>
VACANT		ADMIN ASSISTANT I	Pharmaceutical Sciences	Pharmaceutical Sciences	313-577-5416	3609	
VACANT		OFFICE SRV CLERK II	Pharmaceutical Sciences	Pharmaceutical Sciences	313-577-5415	3610	
Mason	Janather	TECHNICIAN	Pharmaceutical Sciences	Pharmaceutical Sciences	313-577-5415	3610	<a href="mailto:janather.mason@wayne.edu">janather.mason@wayne.edu</a>
<b><i>Pharmaceutical Sciences</i></b>							
Abramson	Hanley N.	PROFESSOR	Pharmaceutical Sciences	Pharmaceutical Sciences	313-577-1711	3607	<a href="mailto:ac2531@wayne.edu">ac2531@wayne.edu</a>
Amayreh	Lenah	RESEARCH ASST	Pharmaceutical Sciences	Pharmaceutical Sciences	313-577-1566	3437	<a href="mailto:eg1007@wayne.edu">eg1007@wayne.edu</a>
Barr	Martin	EMERITUS PROFESSOR	Pharmaceutical Sciences	Pharmaceutical Sciences	313-577-1047	3144	<a href="mailto:mbarr@nshore.net">mbarr@nshore.net</a>
Bhalla	Deepak K.	ASSOCIATE DEAN RESEARCH	Pharmaceutical Sciences	Pharmaceutical Sciences	313-577-3980	3601	<a href="mailto:ad6268@wayne.edu">ad6268@wayne.edu</a>
Bhattarai	Shanta Raj	POST-DOC FELLOW	Pharmaceutical Sciences	Pharmaceutical Sciences	313-577-6511	3250	<a href="mailto:shantarai@wayne.edu">shantarai@wayne.edu</a>
Bhoopalan	Vanitha	RESEARCH ASST	Pharmaceutical Sciences	Pharmaceutical Sciences	313-577-3914	5320	<a href="mailto:dy8663@wayne.edu">dy8663@wayne.edu</a>
Breen	Paul	RESEARCH ASST	Pharmaceutical Sciences	Pharmaceutical Sciences	313-993-6948	5350	<a href="mailto:ep9627@wayne.edu">ep9627@wayne.edu</a>
Chang	Qingshan	RESEARCH ASSC	Pharmaceutical Sciences	Pharmaceutical Sciences	313-993-7665	3520	<a href="mailto:ep6164@wayne.edu">ep6164@wayne.edu</a>
Chen	Bailing	POST-DOC FELLOW	Pharmaceutical Sciences	Pharmaceutical Sciences	313-993-7665	3520	<a href="mailto:ep9220@wayne.edu">ep9220@wayne.edu</a>
Chen	Fei	ASSC PROFESSOR	Pharmaceutical Sciences	Pharmaceutical Sciences	313-577-9201	3603	<a href="mailto:fchen@wayne.edu">fchen@wayne.edu</a>
Commissaris	Randall L.	ASSC PROFESSOR	Pharmaceutical Sciences	Pharmaceutical Sciences	313-577-0813	3126	<a href="mailto:aa5363@wayne.edu">aa5363@wayne.edu</a>
Dewal	Mahendar	POST-DOC FELLOW	Pharmaceutical Sciences	Pharmaceutical Sciences	313-577-5808	3610	<a href="mailto:ed5372@wayne.edu">ed5372@wayne.edu</a>
Dutta	Aloke K.	PROFESSOR	Pharmaceutical Sciences	Pharmaceutical Sciences	313-577-1064	3128	<a href="mailto:af8308@wayne.edu">af8308@wayne.edu</a>
Firestine	Steven	ASSC PROFESSOR	Pharmaceutical Sciences	Pharmaceutical Sciences	313-577-0455	3142	<a href="mailto:ay1872@wayne.edu">ay1872@wayne.edu</a>
Gogoi	Sanjib	POST-DOC FELLOW	Pharmaceutical Sciences	Pharmaceutical Sciences	313-577-0280	3610	<a href="mailto:ee6406@wayne.edu">ee6406@wayne.edu</a>
Gopishetty	Bhaskar	POST-DOC FELLOW	Pharmaceutical Sciences	Pharmaceutical Sciences	313-577-0280	3610	<a href="mailto:eb9916@wayne.edu">eb9916@wayne.edu</a>
Govind	Sudha	RESEARCH ASST	Pharmaceutical Sciences	Pharmaceutical Sciences	313-577-1047	3610	<a href="mailto:ei0843@wayne.edu">ei0843@wayne.edu</a>
Hazeldine	Stuart	RESEARCH ASSC	Pharmaceutical Sciences	Pharmaceutical Sciences	313-577-6511	3250	<a href="mailto:ae4971@wayne.edu">ae4971@wayne.edu</a>
Hirata	Aiko	RESEARCH ASST	Pharmaceutical Sciences	Pharmaceutical Sciences	313-577-5872	3125	<a href="mailto:ahirata@wayne.edu">ahirata@wayne.edu</a>
Hirata	Fusao	PROFESSOR	Pharmaceutical Sciences	Pharmaceutical Sciences	313-577-1552	3118	<a href="mailto:ad6284@wayne.edu">ad6284@wayne.edu</a>
Islam	M. Shahid	POST-DOC FELLOW	Pharmaceutical Sciences	Pharmaceutical Sciences	313-577-5808	3610	<a href="mailto:ed8295@wayne.edu">ed8295@wayne.edu</a>
Joesph	Nicholas	RESEARCH ASST	Pharmaceutical Sciences	Pharmaceutical Sciences	313-993-6948	5350	<a href="mailto:az5268@wayne.edu">az5268@wayne.edu</a>

# Pharmaceutical Sciences

<i>Last Name</i>	<i>First Name</i>	<i>Title</i>	<i>Department</i>	<i>Program</i>	<i>Phone Number</i>	<i>Office Number</i>	<i>Email Address</i>
Kowluru	Anjaneyulu	PROFESSOR	Pharmaceutical Sciences	Pharmaceutical Sciences	313-577-5490	3617	<a href="mailto:af7147@wayne.edu">af7147@wayne.edu</a>
Kyathanahalli	Chandra	POST-DOC FELLOW	Pharmaceutical Sciences	Pharmaceutical Sciences	313-577-1000	3617	<a href="mailto:eg1920@wayne.edu">eg1920@wayne.edu</a>
Li	Jing	POST-DOC FELLOW	Pharmaceutical Sciences	Pharmaceutical Sciences	313-577-6511	na	na
Liu	Bin	RESEARCH ASSC	Pharmaceutical Sciences	Pharmaceutical Sciences	313-577-0815	3437	TBA
Liu	Jia	RESEARCH ASST	Pharmaceutical Sciences	Pharmaceutical Sciences	313-993-7665	3520	<a href="mailto:ep7396@wayne.edu">ep7396@wayne.edu</a>
Louis-Ferdinand	Robert T.	PROFESSOR	Pharmaceutical Sciences	Pharmaceutical Sciences	313-577-1715	3122	<a href="mailto:aa1196@wayne.edu">aa1196@wayne.edu</a>
Merkel	Olivia	ASST PROFESSOR	Pharmaceutical Sciences	Pharmaceutical Sciences	313-577-1223/6511	3132	<a href="mailto:olivia.merkel@wayne.edu">olivia.merkel@wayne.edu</a>
Mohammad	Abdul Khader	RESEARCH ASST	Pharmaceutical Sciences	Pharmaceutical Sciences	313-577-1566	3437	<a href="mailto:du2526@wayne.edu">du2526@wayne.edu</a>
Moszczyńska	Anna	ASST PROFESSOR	Pharmaceutical Sciences	Pharmaceutical Sciences	313-577-1257	3142/3250	<a href="mailto:amosz@wayne.edu">amosz@wayne.edu</a>
Nagwekar	Janardan	EMERITUS PROFESSOR	Pharmaceutical Sciences	Pharmaceutical Sciences	313-577-1047	3610	<a href="mailto:aa1359@wayne.edu">aa1359@wayne.edu</a>
Oupicky	David	ASSC PROFESSOR	Pharmaceutical Sciences	Pharmaceutical Sciences	313-993-7669	3138	<a href="mailto:ao4316@wayne.edu">ao4316@wayne.edu</a>
Pitts	David K.	ASSC PROFESSOR	Pharmaceutical Sciences	Pharmaceutical Sciences	313-577-0819	3124	<a href="mailto:ad3402@wayne.edu">ad3402@wayne.edu</a>
Pokorski	Phillip L.	ASST PROFESSOR-Clinical	Pharmaceutical Sciences	Pharmaceutical Sciences	313-577-0015	2116	<a href="mailto:aa9410@wayne.edu">aa9410@wayne.edu</a>
Reineke	Joshua	ASST PROFESSOR	Pharmaceutical Sciences	Pharmaceutical Sciences	313-577-3761	3136	<a href="mailto:ea3420@wayne.edu">ea3420@wayne.edu</a>
Roberts, III	George	POST-DOC FELLOW	Pharmaceutical Sciences	Pharmaceutical Sciences	313-577-0815	3437	<a href="mailto:ai5214@wayne.edu">ai5214@wayne.edu</a>
Santra	Soumava	POST-DOC FELLOW	Pharmaceutical Sciences	Pharmaceutical Sciences	313-577-0280	3610	<a href="mailto:al7318@wayne.edu">al7318@wayne.edu</a>
Separovic	Duska	ASSC PROFESSOR-Research	Pharmaceutical Sciences	Pharmaceutical Sciences	313-577-8065	3144	<a href="mailto:ai7063@wayne.edu">ai7063@wayne.edu</a>
Sharma	Shiv	RESEARCH ASSC	Pharmaceutical Sciences	Pharmaceutical Sciences	313-577-5808	3610	<a href="mailto:eb4868@wayne.edu">eb4868@wayne.edu</a>
Stemmer	Paul M.	ASSC PROFESSOR	Pharmaceutical Sciences	Pharmaceutical Sciences	313-577-6536	IEHS	<a href="mailto:pmstemmer@wayne.edu">pmstemmer@wayne.edu</a>
Wani	Amit	POST-DOC FELLOW	Pharmaceutical Sciences	Pharmaceutical Sciences	313-577-6511	na	<a href="mailto:amitwani@wayne.edu">amitwani@wayne.edu</a>
Wormser	Henry C.	PROFESSOR	Pharmaceutical Sciences	Pharmaceutical Sciences	313-993-4244	3605	<a href="mailto:aa2241@wayne.edu">aa2241@wayne.edu</a>
Yi	Zhengping	ASSC PROFESSOR	Pharmaceutical Sciences	Pharmaceutical Sciences	313-577-0823	3146	<a href="mailto:zhengping.yi@wayne.edu">zhengping.yi@wayne.edu</a>
Zhang	Xiangmin	RESEARCH ASSC	Pharmaceutical Sciences	Pharmaceutical Sciences	313-577-1047	3330	<a href="mailto:ev8740@wayne.edu">ev8740@wayne.edu</a>

# Pharmacy Practice

<i>Last Name</i>	<i>First Name</i>	<i>Title</i>	<i>Department</i>	<i>Program</i>	<i>Phone Number</i>	<i>Office Number</i>	<i>Email Address</i>
Slaughter	Richard	ASSOCIATE DEAN/Interim Chair	Dean's Office	Administration	313-577-8502	2629	<a href="mailto:aa4063@wayne.edu">aa4063@wayne.edu</a>
Vacant		CHAIR	Pharmacy Practice	Pharmacy Practice	313-577-0827	2152	
Samuels	Tamra	PROGRAM SPECIALIST	Pharmacy Practice	Pharmacy Practice	313-993-6823	2190	<a href="mailto:t_samuels@wayne.edu">t_samuels@wayne.edu</a>
Hicks	Kelly	SECRETARY III	Pharmacy Practice	Pharmacy Practice	313-577-0826	2190	<a href="mailto:kellyhicks@wayne.edu">kellyhicks@wayne.edu</a>
Tomasovitch	David	ADMINISTRATIVE ASST	Pharmacy Practice	Pharmacy Practice	313-577-5859	2154	<a href="mailto:cu9410@wayne.edu">cu9410@wayne.edu</a>

## Pharmacy Practice

Ashour	Hossam M.	ASST PROFESSOR	Pharmacy Practice	Pharmacy Practice	313-577-6549	4213/4320	<a href="mailto:hossam@wayne.edu">hossam@wayne.edu</a>
Bach	David S.	ACAD DIR/Assoc Professor-Clinical	Pharmacy Practice	Pharmacy Practice	313-577-5932	4154	<a href="mailto:ac5013@wayne.edu">ac5013@wayne.edu</a>
Berlie	Helen	ASST PROFESSOR-Clinical	Pharmacy Practice	Pharmacy Practice	313-577-0495	4124	<a href="mailto:ai2269@wayne.edu">ai2269@wayne.edu</a>
Carreno	Joseph	POST-DOC FELLOW	Pharmacy Practice	Pharmacy Practice	313-577-5381	4131	<a href="mailto:ew4529@wayne.edu">ew4529@wayne.edu</a>
Cassapao	Anthony	POST-DOC FELLOW	Pharmacy Practice	Pharmacy Practice	313-577-5381	4131	<a href="mailto:al6730@wayne.edu">al6730@wayne.edu</a>
Cha	Raymond	ASST PROFESSOR-Clinical	Pharmacy Practice	Pharmacy Practice	313-577-5303	4128	<a href="mailto:ai0976@wayne.edu">ai0976@wayne.edu</a>
Dadayan	Sara	ASST PROFESSOR-Clinical	Pharmacy Practice	Pharmacy Practice	313-577-0329	2118	<a href="mailto:ee0073@wayne.edu">ee0073@wayne.edu</a>
Davis	Susan	ASSC PROFESSOR-Clinical	Pharmacy Practice	Pharmacy Practice	313-577-5451	4137	<a href="mailto:ar3891@wayne.edu">ar3891@wayne.edu</a>
Garwood	Candice	ASSC PROFESSOR-Clinical	Pharmacy Practice	Pharmacy Practice	313-577-1371	4143	<a href="mailto:ay3181@wayne.edu">ay3181@wayne.edu</a>
Giuliano	Christopher A.	ASST PROFESSOR-Clinical	Pharmacy Practice	Pharmacy Practice	313-577-0824	2190	<a href="mailto:ek2397@wayne.edu">ek2397@wayne.edu</a>
Gortney	Justine	ASST PROFESSOR- Clinical	Pharmacy Practice	Pharmacy Practice	313-993-8196	4152	<a href="mailto:ai2775@wayne.edu">ai2775@wayne.edu</a>
Hall	Ashley	POST-DOC FELLOW	Pharmacy Practice	Pharmacy Practice	313-577-5381	4131	<a href="mailto:ei1890@wayne.edu">ei1890@wayne.edu</a>
Ireland	Cortney	RESEARCH ASST	Pharmacy Practice	Pharmacy Practice	313-993-4115	4341	<a href="mailto:ba7506@wayne.edu">ba7506@wayne.edu</a>
Jaber	Linda	PROFESSOR	Pharmacy Practice	Pharmacy Practice	313-577-5899	2134	<a href="mailto:aa6893@wayne.edu">aa6893@wayne.edu</a>
Jarvi	Thomas	RESEARCH ASST	Pharmacy Practice	Pharmacy Practice	Off Site	2190	<a href="mailto:ev9273@wayne.edu">ev9273@wayne.edu</a>
Kilgore	Paul	ASSC PROFESSOR	Pharmacy Practice	Pharmacy Practice	313-577-0329	2118	<a href="mailto:paul.kilgore@wayne.edu">paul.kilgore@wayne.edu</a>
Kale-Pradhan	Pramodini B.	PROFESSOR-Clinical	Pharmacy Practice	Pharmacy Practice	313-577-1695	4132	<a href="mailto:ad4265@wayne.edu">ad4265@wayne.edu</a>
Lehr	Victoria Tutag	ASSC PROFESSOR-Clinical	Pharmacy Practice	Pharmacy Practice	313-993-7743	4144	<a href="mailto:ai6726@wayne.edu">ai6726@wayne.edu</a>
Lucarotti	Richard	PROFESSOR-Clinical	Pharmacy Practice	Pharmacy Practice	313-577-8741	2122	<a href="mailto:aa2532@wayne.edu">aa2532@wayne.edu</a>
Martin	Emily T.	ASST PROFESSOR	Pharmacy Practice	Pharmacy Practice	313-577-5932	2136	<a href="mailto:etmartin@wayne.edu">etmartin@wayne.edu</a>

# Pharmacy Practice

<i>Last Name</i>	<i>First Name</i>	<i>Title</i>	<i>Department</i>	<i>Program</i>	<i>Phone Number</i>	<i>Office Number</i>	<i>Email Address</i>
Martinez	Jessica	STUDENT ASST	Pharmacy Practice	Pharmacy Practice	313-993-4115	4341	<a href="mailto:jmartinez@wayne.edu">jmartinez@wayne.edu</a>
Miller	Douglas	PROFESSOR-Clinical	Pharmacy Practice	Pharmacy Practice	313-577-6354	2156	<a href="mailto:aa3875@wayne.edu">aa3875@wayne.edu</a>
Moser	Lynette R.	ASST PROFESSOR-Clinical	Pharmacy Practice	Pharmacy Practice	313-577-0115	4136	<a href="mailto:aa4576@wayne.edu">aa4576@wayne.edu</a>
O'Connell	Mary Beth	ASSC PROFESSOR	Pharmacy Practice	Pharmacy Practice	313-993-7620	2148	<a href="mailto:ao4856@wayne.edu">ao4856@wayne.edu</a>
Parker Jr	Dennis	ASSC PROFESSOR-Clinical	Pharmacy Practice	Pharmacy Practice	313-577-6152	4141	<a href="mailto:ah2262@wayne.edu">ah2262@wayne.edu</a>
Pattin	Anthony J.	ASST PROFESSOR-Clinical	Pharmacy Practice	Pharmacy Practice	313-993-7465	2124	<a href="mailto:apattin2@wayne.edu">apattin2@wayne.edu</a>
Pinelli	Nicole	ASST PROFESSOR-Clinical	Pharmacy Practice	Pharmacy Practice	313-993-7555	2132	<a href="mailto:ah8430@wayne.edu">ah8430@wayne.edu</a>
Rybak	Michael	PROFESSOR	Pharmacy Practice	Pharmacy Practice	313-577-4376	4148	<a href="mailto:aa1592@wayne.edu">aa1592@wayne.edu</a>
Salinitri	Francine	ASST PROFESSOR-Clinical	Pharmacy Practice	Pharmacy Practice	313-577-0453	4127	<a href="mailto:aq8762@wayne.edu">aq8762@wayne.edu</a>
Schiavi	Paul	ASST PROFESSOR	Pharmacy Practice	Pharmacy Practice	313-993-7517	2128	<a href="mailto:at7833@wayne.edu">at7833@wayne.edu</a>
Shukkur	Muhammed	RESEARCH ASST	Pharmacy Practice	Pharmacy Practice	313-577-5851	4320	<a href="mailto:eg7046@wayne.edu">eg7046@wayne.edu</a>
Smith	Geralynn	PART-TIME FACULTY	Pharmacy Practice	Pharmacy Practice	313-577-5401	2142	<a href="mailto:aa2242@wayne.edu">aa2242@wayne.edu</a>
Smythe	Maureen	PROFESSOR-Clinical	Pharmacy Practice	Pharmacy Practice	313-577-5384/248-898-4069	4126	<a href="mailto:ac8418@wayne.edu">ac8418@wayne.edu</a>
Stutrud	Carol Bugdalski	SENIOR LECTURER	Pharmacy Practice	Pharmacy Practice	313-577-5405	2150	<a href="mailto:carolb@wayne.edu">carolb@wayne.edu</a>
Taylor	Thomas N.	ASSC PROFESSOR	Pharmacy Practice	Pharmacy Practice	313-577-5404	2138	<a href="mailto:ec2942@wayne.edu">ec2942@wayne.edu</a>
Vivian	Jesse	PROFESSOR	Pharmacy Practice	Pharmacy Practice	313-577-5389	2144	<a href="mailto:ac6027@wayne.edu">ac6027@wayne.edu</a>
Werth	Brian	POST-DOC FELLOW	Pharmacy Practice	Pharmacy Practice	313-577-5381	4131	<a href="mailto:et1598@wayne.edu">et1598@wayne.edu</a>
Wilhelm	Shelia M.	ASST PROFESSOR-Clinical	Pharmacy Practice	Pharmacy Practice	313-993-7671	4134	<a href="mailto:av2238@wayne.edu">av2238@wayne.edu</a>

# College-wide Alpha Directory

<i>Last Name</i>	<i>First Name</i>	<i>Title</i>	<i>Department</i>	<i>Program</i>	<i>Phone Number</i>	<i>Office Number</i>	<i>Email Address</i>
Apolloni	Karen	ASST PROFESSOR-Clinical	Fundamental and Applied Sciences	Pathologists' Assistant/ Clinical Lab Science	313-577-2014	MS/5439 W	<a href="mailto:ae2586@wayne.edu">ae2586@wayne.edu</a>
Abramson	Hanley N.	PROFESSOR	Pharmaceutical Sciences	Pharmaceutical Sciences	313-577-1711	3607	<a href="mailto:ac2531@wayne.edu">ac2531@wayne.edu</a>
Adamo	Diane	ASST PROFESSOR	Health Care Sciences	Physical Therapy	313-577-5625	2314	<a href="mailto:ac9176@wayne.edu">ac9176@wayne.edu</a>
Amayreh	Lenah	RESEARCH ASST	Pharmaceutical Sciences	Pharmaceutical Sciences	313-577-1566	3437	<a href="mailto:eg1007@wayne.edu">eg1007@wayne.edu</a>
Arena	Sara K.	INSTR ASST	Health Care Sciences	Physical Therapy	313-577-1435	2221	<a href="mailto:sarena@wayne.edu">sarena@wayne.edu</a>
Ashcraft	Debra	SUPERVISOR II	DLAR	DLAR	313-577-5824	5611	<a href="mailto:d_ashcraft@wayne.edu">d_ashcraft@wayne.edu</a>
Ashour	Hossam M.	ASST PROFESSOR	Pharmacy Practice	Pharmacy Practice	313-577-6549	4213/4320	<a href="mailto:hossam@wayne.edu">hossam@wayne.edu</a>
Asman	David C.	SECRETARY III	Dean's Office	Administration	313-577-1574	2620	<a href="mailto:ac5131@wayne.edu">ac5131@wayne.edu</a>
Bach	David S.	ACAD DIR/Assoc Professor-Clinical	Pharmacy Practice	Pharmacy Practice	313-577-5932	4154	<a href="mailto:ac5013@wayne.edu">ac5013@wayne.edu</a>
Barr	Martin	EMERITUS PROFESSOR	Pharmaceutical Sciences	Pharmaceutical Sciences	313-577-1047	3144	<a href="mailto:mbarr@nshore.net">mbarr@nshore.net</a>
Bassett	David JP.	PROFESSOR	Dean's Office	Inhalation Facility Lab	313-577-1211/1424	5325	<a href="mailto:david.bassett@wayne.edu">david.bassett@wayne.edu</a>
Bee	Mary	PART-TIME FACULTY	Health Care Sciences	Physician Assistant Studies	313-577-1432	2248	<a href="mailto:ad1755@wayne.edu">ad1755@wayne.edu</a>
Bell	Sonia	GRANT ADMINISTRATOR	Dean's Office	Research	313-577-5341	2605	<a href="mailto:ah0597@wayne.edu">ah0597@wayne.edu</a>
Bentley	Gail	ADJUNCT FACULTY	Fundamental and Applied Sciences	Pathologists' Assistant	313-745-2553	Harper Hosp	<a href="mailto:ac7215@wayne.edu">ac7215@wayne.edu</a>
Berlie	Helen	ASST PROFESSOR-Clinical	Pharmacy Practice	Pharmacy Practice	313-577-0495	4124	<a href="mailto:ai2269@wayne.edu">ai2269@wayne.edu</a>
Bhalla	Deepak K.	ASSOCIATE DEAN RESEARCH	Pharmaceutical Sciences	Pharmaceutical Sciences	313-577-3980	2621/3601	<a href="mailto:ad6268@wayne.edu">ad6268@wayne.edu</a>
Bhattarai	Shanta Raj	POST-DOC FELLOW	Pharmaceutical Sciences	Pharmaceutical Sciences	313-577-6511	3250	<a href="mailto:shantarai@wayne.edu">shantarai@wayne.edu</a>
Bhoopalan	Vanita	RESEARCH ASST	Inst. Of Envir. Health Sciences	Inst. Of Envir. Health Sciences	313-577-5507	5333	<a href="mailto:dy8663@wayne.edu">dy8663@wayne.edu</a>
Birk	Thomas J.	ASSC PROFESSOR	Health Care Sciences	Physical Therapy	313-577-5664	2590	<a href="mailto:ae7647@wayne.edu">ae7647@wayne.edu</a>
Blumberg	Kathleen	Director	Dean's Office	Bus. Affairs	313-577-1578	2601	<a href="mailto:dx0229@wayne.edu">dx0229@wayne.edu</a>
Borland	Sarah	PART-TIME FACULTY	Health Care Sciences	Radiologic Technology	313-577-1432	1130.3	<a href="mailto:dx9339@wayne.edu">dx9339@wayne.edu</a>
Breen	Paul	RESEARCH ASST	Pharmaceutical Sciences	Pharmaceutical Sciences	313-993-6948	5350	<a href="mailto:ep9627@wayne.edu">ep9627@wayne.edu</a>
Brogan	Shirley	PART-TIME FACULTY	Fundamental and Applied Sciences	Mortuary Science	313-577-2050	MS/5439 W	<a href="mailto:brogansa@wayne.edu">brogansa@wayne.edu</a>
Brossia	Lisa	SR DIRECTOR	DLAR	DLAR	313-993-6790	5603	<a href="mailto:lbrossia@wayne.edu">lbrossia@wayne.edu</a>
Brown	Cynthia	PART-TIME FACULTY	Health Care Sciences	Physical Therapy	313-577-1432	2248	<a href="mailto:ai4192@wayne.edu">ai4192@wayne.edu</a>
Brown	Janet M.	DIRECTOR/Asst Professor	Fundamental and Applied Sciences	Clinical Laboratory Science	313-577-5526	MS/5439 W	<a href="mailto:aa3663@wayne.edu">aa3663@wayne.edu</a>
Brown	Faye	SECRETARY III	Dean's Office	Student and Alumni Affairs	313-577-1716/4814	1613	<a href="mailto:ad3274@wayne.edu">ad3274@wayne.edu</a>
Burger	Benjamin	RESEARCH ASST	Inst. of Envir. Health Sciences	Inst. of Envir. Health Sciences	313-577-5618	5333	<a href="mailto:ec1580@wayne.edu">ec1580@wayne.edu</a>
Burke	Matthew	Radiology	Health Care Sciences	Radiologist Asst Studies Prog	313-916-2007	Henry Ford Hosp	na

# College-wide Alpha Directory

<i>Last Name</i>	<i>First Name</i>	<i>Title</i>	<i>Department</i>	<i>Program</i>	<i>Phone Number</i>	<i>Office Number</i>	<i>Email Address</i>
Burns	Lakisha	ADMIN ASST I	Inst. Of Envir. Health Sciences	Inst. Of Envir. Health Sciences	313-577-0100	5135	<a href="mailto:eb3788@wayne.edu">eb3788@wayne.edu</a>
Butt	Gwen	SECRETARY III	Dean's Office	Student and Alumni Affairs	313-577-1719	1611	<a href="mailto:ac7298@wayne.edu">ac7298@wayne.edu</a>
Cameron	Jamye D.	PART-TIME FACULTY	Fundamental and Applied Sciences	Mortuary Science	313-577-2050	MS/5439 W	<a href="mailto:mortscidiva@wayne.edu">mortscidiva@wayne.edu</a>
Canine	John	PART-TIME FACULTY	Fundamental and Applied Sciences	Mortuary Science	313-577-2050	MS/5439 W	na
Carlson	Ryan	SYSTEMS INTEGRATOR I	Dean's Office	Information Technology	313-577-1230	4611	<a href="mailto:aj4592@wayne.edu">aj4592@wayne.edu</a>
Carreno	Joseph	POST-DOC FELLOW	Pharmacy Practice	Pharmacy Practice	313-577-5381	4131	<a href="mailto:ew4529@wayne.edu">ew4529@wayne.edu</a>
Caruso	Joseph	ASST PROFESSOR	Inst. Of Envir. Health Sciences	Inst. Of Envir. Health Sciences	313-577-6542	2105 Scott Hall	<a href="mailto:af7507@wayne.edu">af7507@wayne.edu</a>
Casaletta	Anthony	PART-TIME FACULTY	Health Care Sciences	Occupational Envl Health Sci	248-888-8867	na	<a href="mailto:ag5176@wayne.edu">ag5176@wayne.edu</a>
Case	Donna	ASSISTANT/Non-Instr	Health Care Sciences	Occupational Therapy	na	na	<a href="mailto:ad0121@wayne.edu">ad0121@wayne.edu</a>
Cassapao	Anthony	POST-DOC FELLOW	Pharmacy Practice	Pharmacy Practice	313-577-5381	4131	<a href="mailto:al6730@wayne.edu">al6730@wayne.edu</a>
Catalano	Carol	INSTRUCTOR-Clinical	Health Care Sciences	Physician Assistant Studies	313-577-4635	2530	<a href="mailto:ag6524@wayne.edu">ag6524@wayne.edu</a>
Cha	Raymond	ASST PROFESSOR-Clinical	Pharmacy Practice	Pharmacy Practice	313-577-5303	4128	<a href="mailto:ai0976@wayne.edu">ai0976@wayne.edu</a>
Chang	Qingshan	RESEARCH ASSC	Pharmaceutical Sciences	Pharmaceutical Sciences	313-993-7665	3520	<a href="mailto:ep6164@wayne.edu">ep6164@wayne.edu</a>
Chen	Bailing	POST-DOC FELLOW	Pharmaceutical Sciences	Pharmaceutical Sciences	313-993-7665	3520	<a href="mailto:ep9220@wayne.edu">ep9220@wayne.edu</a>
Chen	Fei	ASSC PROFESSOR	Pharmaceutical Sciences	Pharmaceutical Sciences	313-577-9201	3603	<a href="mailto:fchen@wayne.edu">fchen@wayne.edu</a>
Childers	Amy	PART-TIME FACULTY	Health Care Sciences	Physical Therapy	313-577-1432	2248	<a href="mailto:af9560@wayne.edu">af9560@wayne.edu</a>
Chioco	Ernest P.	ADJ FACULTY	Health Care Sciences	Occupational Envl Health Sci	586-746-1761	na	<a href="mailto:echiodo@pol.net">echiodo@pol.net</a>
Chopra	Dharam	PROFESSOR	Inst. Of Envir. Health Sciences	Inst. Of Envir. Health Sciences	313-577-5585	4516	<a href="mailto:d.chopra@wayne.edu">d.chopra@wayne.edu</a>
Christie	Susan	COORDINATOR III	Dean's Office	Administration	313-577-1709	2436	<a href="mailto:aa5387@wayne.edu">aa5387@wayne.edu</a>
Clark	Mary	ASST DEAN	Dean's Office	Student and Alumni Affairs	313-577-5876	1637	<a href="mailto:ax9721@wayne.edu">ax9721@wayne.edu</a>
Collins	Denise	VICE CHAIR, Radiology	Health Care Sciences	Radiologist Asst Studies Prog	313-916-8429	Henry Ford Hosp	na
Commissaris	Randall L.	ASSC PROFESSOR	Pharmaceutical Sciences	Pharmaceutical Sciences	313-577-0813	3126	<a href="mailto:aa5363@wayne.edu">aa5363@wayne.edu</a>
Conti	Gerry E.	ASST PROFESSOR	Health Care Sciences	Occupational Therapy	313-577-2188	2204	<a href="mailto:ak3113@wayne.edu">ak3113@wayne.edu</a>
Corcoran	George B.	DEPT CHAIR/Professor	Pharmaceutical Sciences	Pharmaceutical Sciences	313-577-1737	3615	<a href="mailto:aa0991@wayne.edu">aa0991@wayne.edu</a>
Cotroneo	Tara	CLINICAL VETERINAIAN	DLAR	DLAR	313-577-1405	407 Scott Hall	<a href="mailto:et1135@wayne.edu">et1135@wayne.edu</a>
Croteau	Daniel	DIV HEAD INTERV Radiology	Health Care Sciences	Radiologist Asst Studies Prog	313-916-1363	Henry Ford Hosp	na
Cusmano	Tiffany	DEVELOPMENT DIRECTOR	Dean's Office	Development	313-577-0273	2609	<a href="mailto:tcusmano@wayne.edu">tcusmano@wayne.edu</a>
Dadayan	Sara	ASST PROFESSOR-Clinical	Pharmacy Practice	Pharmacy Practice	313-577-0329	2118	<a href="mailto:ee0073@wayne.edu">ee0073@wayne.edu</a>
Davis	Susan	ASSC PROFESSOR-Clinical	Pharmacy Practice	Pharmacy Practice	313-577-5451	4137	<a href="mailto:ar3891@wayne.edu">ar3891@wayne.edu</a>

# College-wide Alpha Directory

<i>Last Name</i>	<i>First Name</i>	<i>Title</i>	<i>Department</i>	<i>Program</i>	<i>Phone Number</i>	<i>Office Number</i>	<i>Email Address</i>
Davis	Lynn	SECURITY	Dean's Office	WSU Public Safety	313-577-7737	1st Floor Guard Station	<a href="mailto:eo7457@wayne.edu">eo7457@wayne.edu</a>
Dayton	Barb	SECRETARY III	Health Care Sciences	Health Care Sciences	313-577-1369	2590	<a href="mailto:ac2605@wayne.edu">ac2605@wayne.edu</a>
Dean-Christie	Karen	SENIOR VETERINARY TECH	DLAR	DLAR	313-993-6738	5603	<a href="mailto:k.dean-christie@wayne.edu">k.dean-christie@wayne.edu</a>
DeMeulemeester	Erik P.	INSTR ASST	Health Care Sciences	Physical Therapy	313-577-1432	2248	<a href="mailto:co5608@wayne.edu">co5608@wayne.edu</a>
Dereski	Mary	ASSC PROFESSOR	Inst. Of Envir. Health Sciences	Inst. Of Envir. Health Sciences	313-577-5597	4116	<a href="mailto:m.dereski@wayne.edu">m.dereski@wayne.edu</a>
Deutsch-Keahey	Diane D.	ASST PROFESSOR-Clinical	Fundamental and Applied Sciences	Clinical Laboratory Science	313-577-5898	MS/5439 W	<a href="mailto:dt7303@wayne.edu">dt7303@wayne.edu</a>
Dewal	Mahendar	POST-DOC FELLOW	Pharmaceutical Sciences	Pharmaceutical Sciences	313-577-5808	3610	<a href="mailto:ed5372@wayne.edu">ed5372@wayne.edu</a>
Dibbley	Susan	VTP PROGRAM DIRECTOR	DLAR	DLAR	313-577-1156	5617	<a href="mailto:sdibbley@wayne.edu">sdibbley@wayne.edu</a>
DiZazzo-Miller	Rosanne	ASST PROFESSOR-Clinical	Health Care Sciences	Occupational Therapy	313-993-3970	2224	<a href="mailto:ar7975@wayne.edu">ar7975@wayne.edu</a>
Dortch	Nicole	APPLICATIONS SPECIALIST I	Dean's Office	Information Technology	313-577-8874	4623	<a href="mailto:ad2391@wayne.edu">ad2391@wayne.edu</a>
Douglas	Ramona	LIBRARY ASSIST II	Learning Resource Center	Learning Resource Center	313-577-1279	LRC	<a href="mailto:aa7921@wayne.edu">aa7921@wayne.edu</a>
Duniec-Dmuchows	Zofia	RESEARCH ASST	Inst. Of Envir. Health Sciences	Inst. Of Envir. Health Sciences	313-577-5570	4240	<a href="mailto:aa2982@wayne.edu">aa2982@wayne.edu</a>
Dunleavy	Kim	ASST PROFESSOR-Clinical	Health Care Sciences	Physical Therapy	313-577-5630	2324	<a href="mailto:ad6611@wayne.edu">ad6611@wayne.edu</a>
Dutta	Aloke K.	PROFESSOR	Pharmaceutical Sciences	Pharmaceutical Sciences	313-577-1064	3128	<a href="mailto:af8308@wayne.edu">af8308@wayne.edu</a>
Ellis	R. Elaine	PROG RECORDS CLK SR	Dean's Office	Student and Alumni Affairs	313-577-2319	1615	<a href="mailto:ab9217@wayne.edu">ab9217@wayne.edu</a>
Fang	Hai-Lin	RESEARCH ASSC	Inst. Of Envir. Health Sciences	Inst. Of Envir. Health Sciences	313-577-5571	4240	<a href="mailto:hlfang@wayne.edu">hlfang@wayne.edu</a>
Farrell Azuta	Michele	ASSOCIATE DIRECTOR	Dean's Office	Information Technology	313-577-1171	4621	<a href="mailto:ai7076@wayne.edu">ai7076@wayne.edu</a>
Ferrera	Tanya	PART-TIME FACULTY	Health Care Sciences	Physical Therapy	313-577-1432	2248	<a href="mailto:tanyaferrera@gmail.com">tanyaferrera@gmail.com</a>
Firby	Robin	PART-TIME FACULTY	Health Care Sciences	Physical Therapy	313-577-1436	2248	<a href="mailto:rfirby@wayne.edu">rfirby@wayne.edu</a>
Firestine	Steven	ASSC PROFESSOR	Pharmaceutical Sciences	Pharmaceutical Sciences	313-577-0455	3142	<a href="mailto:av1872@wayne.edu">av1872@wayne.edu</a>
Fleck	Tracey M.	INSTR ASST	Health Care Sciences	Physical Therapy	313-577-1432	2249	<a href="mailto:traceyfleck@wayne.edu">traceyfleck@wayne.edu</a>
Foshey	Don	ADMIN ASST II	DLAR	DLAR	313-577-8303	5124	<a href="mailto:ac9784@wayne.edu">ac9784@wayne.edu</a>
Fracassa	Moira	ACAD SRV OFF II	Dean's Office	Student & Alumni Affairs	313-577-8947	1631	<a href="mailto:aw9799@wayne.edu">aw9799@wayne.edu</a>
Frade	Peter	CHAIR/PRO DIR/Assc Professor	Fundamental and Applied Sciences	Anatomic Pathologist Assistant	313-577-7874	MS/5439 W	<a href="mailto:ab8123@wayne.edu">ab8123@wayne.edu</a>
Frederick	Kurt	CLINICAL ED COORD	Health Care Sciences	Radiation Therapy Technology	313-577-0385	2240	<a href="mailto:kurtfrederick@wayne.edu">kurtfrederick@wayne.edu</a>
Gao	Xiufeng	RESEARCH ASST	Dean's Office	Inhalation Facility Lab	313-577-1211	5325	<a href="mailto:aa0137@wayne.edu">aa0137@wayne.edu</a>
Gargano	Mary	RESEARCH ASST	Inst. Of Envir. Health Sciences	Inst. Of Envir. Health Sciences	313-577-5521	4250	<a href="mailto:ae4865@wayne.edu">ae4865@wayne.edu</a>
Garwood	Candice	ASSC PROFESSOR-Clinical	Pharmacy Practice	Pharmacy Practice	313-577-1371	4143	<a href="mailto:av3181@wayne.edu">av3181@wayne.edu</a>
Gee	Sharon	PART-TIME FACULTY	Fundamental and Applied Sciences	Mortuary Science	313-577-2050	MS/5439 W	<a href="mailto:sgee@wayne.edu">sgee@wayne.edu</a>

# College-wide Alpha Directory

<i>Last Name</i>	<i>First Name</i>	<i>Title</i>	<i>Department</i>	<i>Program</i>	<i>Phone Number</i>	<i>Office Number</i>	<i>Email Address</i>
Geitzen	Lindsay	ASST PROFESSOR-Clinical	Health Care Sciences	Physician Assistant Studies	313-577-4653	2554	<a href="mailto:av6457@wayne.edu">av6457@wayne.edu</a>
Geltz	Kevin M.	ASST PROFESSOR-Clinical/Clinical Coord	Health Care Sciences	Physician Assistant Studies	313-993-4052	2556	<a href="mailto:ac3255@wayne.edu">ac3255@wayne.edu</a>
George	Rajiv	RESEARCH ASSISTANT	Health Care Sciences	Physical Therapy	313-577-1432	2248	<a href="mailto:du0644@wayne.edu">du0644@wayne.edu</a>
Giampuzzi	Cristina A.	INSTR ASST	Health Care Sciences	Physical Therapy	313-577-4643	2221	<a href="mailto:ag5095@wayne.edu">ag5095@wayne.edu</a>
Gilkey	Stephanie	DIRECTOR/ASST PROFESSOR-Clinical	Health Care Sciences	Physician Assistant Studies	313-577-9666	2540	<a href="mailto:ab4703@wayne.edu">ab4703@wayne.edu</a>
Giuliano	Christopher A.	ASST PROFESSOR-Clinical	Pharmacy Practice	Pharmacy Practice	313-577-0824	2190	<a href="mailto:ek2397@wayne.edu">ek2397@wayne.edu</a>
Gogoi	Sanjib	POST-DOC FELLOW	Pharmaceutical Sciences	Pharmaceutical Sciences	313-577-0280	3610	<a href="mailto:ee6406@wayne.edu">ee6406@wayne.edu</a>
Goldberg	Allon	ASST PROFESSOR	Health Care Sciences	Physical Therapy	313-577-8608	1210	<a href="mailto:ae0283@wayne.edu">ae0283@wayne.edu</a>
Golinski	Mary	ASST PROFESSOR-Clinical	Health Care Sciences	Nurse Anesthesia	313-745-4956	2T DRH Annx	<a href="mailto:ab8372@wayne.edu">ab8372@wayne.edu</a>
Gopishetty	Bhaskar	POST-DOC FELLOW	Pharmaceutical Sciences	Pharmaceutical Sciences	313-577-0280	3610	<a href="mailto:eb9916@wayne.edu">eb9916@wayne.edu</a>
Gortney	Justine	ASST PROFESSOR- Clinical	Pharmacy Practice	Pharmacy Practice	313-993-8196	4152	<a href="mailto:ai2775@wayne.edu">ai2775@wayne.edu</a>
Govind	Sudha	RESEARCH ASST	Pharmaceutical Sciences	Pharmaceutical Sciences	313-577-1047	3610	<a href="mailto:ei0843@wayne.edu">ei0843@wayne.edu</a>
Green	Debora	PART-TIME FACULTY	Fundamental and Applied Sciences	Mortuary Science	313-577-2050	MS/5439 W	<a href="mailto:ag5732@wayne.edu">ag5732@wayne.edu</a>
Haglund	Valdor	ASST PROFESSOR-Clinical	Health Care Sciences	Nurse Anesthesia	313-996-0034	2V DRH	<a href="mailto:ab1181@wayne.edu">ab1181@wayne.edu</a>
Hall	Ashley	POST-DOC FELLOW	Pharmacy Practice	Pharmacy Practice	313-577-5381	4131	<a href="mailto:ei1890@wayne.edu">ei1890@wayne.edu</a>
Hazeldine	Stuart	RESEARCH ASSC IN IERIM CHAIR/ Director/Assc Professor-Clinical	Pharmaceutical Sciences	Pharmaceutical Sciences	313-577-6511	3250	<a href="mailto:ae4971@wayne.edu">ae4971@wayne.edu</a>
Head	Doreen Y.	Director/Assc Professor-Clinical	Health Care Sciences	Occupational Therapy	313-577-5884	2226	<a href="mailto:ad8560@wayne.edu">ad8560@wayne.edu</a>
Hicks	Kelly	SECRETARY III	Pharmacy Practice	Pharmacy Practice	313-577-0826	2190	<a href="mailto:kellyhicks@wayne.edu">kellyhicks@wayne.edu</a>
Hirata	Fusao	PROFESSOR	Pharmaceutical Sciences	Pharmaceutical Sciences	313-577-1552	3118	<a href="mailto:ad6284@wayne.edu">ad6284@wayne.edu</a>
Hirata	Aiko	RESEARCH ASST	Pharmaceutical Sciences	Pharmaceutical Sciences	313-577-5872	3125	<a href="mailto:ahirata@wayne.edu">ahirata@wayne.edu</a>
Ho	Ye-Shih	PROFESSOR	Inst. Of Envir. Health Sciences	Inst. Of Envir. Health Sciences	313-577-6574	5230.4	<a href="mailto:yho@wayne.edu">yho@wayne.edu</a>
Hudder	Alice	ASST PROFESSOR	Inst. Of Envir. Health Sciences	Inst. Of Envir. Health Sciences	313-577-6578	5230.5	<a href="mailto:alice.hudder@wayne.edu">alice.hudder@wayne.edu</a>
Hunt	Cindy	PA-C INTERV Radiology	Health Care Sciences	Radiologist Asst Studies Prog	313-916-5308	Henry Ford Hosp	<a href="mailto:aj0760@wayne.edu">aj0760@wayne.edu</a>
Husband	Roger	PART-TIME FACULTY	Fundamental and Applied Sciences	Mortuary Science	313-577-2050	MS/5439 W	<a href="mailto:ak1672@wayne.edu">ak1672@wayne.edu</a>
Husinka	Kristina	SR VETERINARY TECH	DLAR	DLAR	313-577-1156	5617	<a href="mailto:khusinka@wayne.edu">khusinka@wayne.edu</a>
Ireland	Cortney	RESEARCH ASST	Pharmacy Practice	Pharmacy Practice	313-993-4115	4341	<a href="mailto:ba7506@wayne.edu">ba7506@wayne.edu</a>
Islam	M. Shahid	POST-DOC FELLOW	Pharmaceutical Sciences	Pharmaceutical Sciences	313-577-5808	3610	<a href="mailto:ed8295@wayne.edu">ed8295@wayne.edu</a>
Jaber	Linda	PROFESSOR	Pharmacy Practice	Pharmacy Practice	313-577-5899	na	<a href="mailto:aa6893@wayne.edu">aa6893@wayne.edu</a>
Jarvi	Thomas	RESEARCH ASST	Pharmacy Practice	Pharmacy Practice	Off Site	2190	<a href="mailto:ev9273@wayne.edu">ev9273@wayne.edu</a>

# College-wide Alpha Directory

<i>Last Name</i>	<i>First Name</i>	<i>Title</i>	<i>Department</i>	<i>Program</i>	<i>Phone Number</i>	<i>Office Number</i>	<i>Email Address</i>
Joesph	Nicholas	RESEARCH ASST	Pharmaceutical Sciences	Pharmaceutical Sciences	313-993-6948	5350	<a href="mailto:az5268@wayne.edu">az5268@wayne.edu</a>
Joseph	Bradley S.	PART-TIME FACULTY	Health Care Sciences	Occupational Env Health Sci	313-577-1551	na	<a href="mailto:aa3509@wayne.edu">aa3509@wayne.edu</a>
Kale-Pradhan	Pramodini B.	PROFESSOR-Clinical	Pharmacy Practice	Pharmacy Practice	313-577-1695	4132	<a href="mailto:ad4265@wayne.edu">ad4265@wayne.edu</a>
Karas	Kathleen	INFORMATION OFFICER II	Dean's Office	Administration	313-577-2312	2631	<a href="mailto:ax8537@wayne.edu">ax8537@wayne.edu</a>
Kath	Kathy	DIRECTOR	Health Care Sciences	Radiologic Technology	313-916-1348	1130.3	<a href="mailto:bb1524@wayne.edu">bb1524@wayne.edu</a>
Keller	Rosann B.	ASST PROFESSOR-Clinical	Health Care Sciences	Radiation Therapy Technology	313-577-5711	1130.1	<a href="mailto:kellerr@wayne.edu">kellerr@wayne.edu</a>
Kempa	Adam	DIRECTOR	Health Care Sciences	Radiation Therapy Technology	313-577-5710	1130.2	<a href="mailto:aa1156@wayne.edu">aa1156@wayne.edu</a>
Kendra	Cathy	SUPERVISOR II	DLAR	DLAR	313-577-1452	5613	<a href="mailto:c.kendra@wayne.edu">c.kendra@wayne.edu</a>
Kerfoot	Edward	DIRECTOR/ASSC PROFESSOR	Health Care Sciences	Occupational Env Health Sci	313-577-1210	5148	<a href="mailto:ab4642@wayne.edu">ab4642@wayne.edu</a>
Kilgore	Paul	ASSC PROFESSOR	Pharmacy Practice	Pharmacy Practice	313-577-0329	2118	<a href="mailto:paul.kilgore@wayne.edu">paul.kilgore@wayne.edu</a>
Kimbrough	Tina	OFFICE SERVICE CLERK II	Dean's Office	Bus. Affairs	313-577-1576	2602	<a href="mailto:tinakimbrough@wayne.edu">tinakimbrough@wayne.edu</a>
Knight	Anita	SECRETARY III	Fundamental and Applied Sciences	Fundamental and Applied Sciences	313-577-2050	MS/5439 W	<a href="mailto:aknight@wayne.edu">aknight@wayne.edu</a>
Kocarek	Thomas	ASSC PROFESSOR	Inst. Of Envir. Health Sciences	Inst. Of Envir. Health Sciences	313-577-6580	4512	<a href="mailto:t.kocarek@wayne.edu">t.kocarek@wayne.edu</a>
Koltuniak	Michael	ACAD SRV OFF I	Dean's Office	Student and Alumni Affairs	313-577-1286	1633	<a href="mailto:mkoltun@wayne.edu">mkoltun@wayne.edu</a>
Kovacek	Jake Jakubiak	PART-TIME FACULTY	Health Care Sciences	Physical Therapy	313-577-1432	2248	<a href="mailto:aw4567@wayne.edu">aw4567@wayne.edu</a>
VACANT	VACANT	ADMIN ASSISTANT I	Pharmaceutical Sciences	Pharmaceutical Sciences	313-577-5416	3609	
Kowluru	Anjaneyulu	PROFESSOR	Pharmaceutical Sciences	Pharmaceutical Sciences	313-577-5490	3617	<a href="mailto:af7147@wayne.edu">af7147@wayne.edu</a>
Koziatek	Susan	PART-TIME FACULTY	Health Care Sciences	Occupational Therapy	313-577-5879	2207	<a href="mailto:suekoziatok@wayne.edu">suekoziatok@wayne.edu</a>
Krauss	John	PART-TIME FACULTY	Health Care Sciences	Physical Therapy	313-577-1432	2248	<a href="mailto:bb0658@wayne.edu">bb0658@wayne.edu</a>
Krisher	Karen K.	ASSC PROFESSOR-Clinical	Fundamental and Applied Sciences	Clinical Laboratory Science	313-577-2050	MS/5439 W	<a href="mailto:karenkrisher@wayne.edu">karenkrisher@wayne.edu</a>
Kyathanahalli	Chandra	POST-DOC FELLOW	Pharmaceutical Sciences	Pharmaceutical Sciences	313-577-1000	3617	<a href="mailto:eg1920@wayne.edu">eg1920@wayne.edu</a>
Lacey	Krim	RESEARCH ASSC	Health Care Sciences	Occupational Therapy	313-577-2647	2224	<a href="mailto:ab2740@wayne.edu">ab2740@wayne.edu</a>
Ladd	E. David	DIRECTOR/ASST PROFESSOR-Clinical	Fundamental and Applied Sciences	Mortuary Science	313-577-1202	MS/5439 W	<a href="mailto:ae4559@wayne.edu">ae4559@wayne.edu</a>
Lane	Serene	LAB ANIMAL LEADER	DLAR	DLAR	313-577-1631	5625	<a href="mailto:ab4887@wayne.edu">ab4887@wayne.edu</a>
LaPorte	Rachelle	LIBRARY CLERK-Sr.	Learning Resource Center	Learning Resource Center	313-577-1279	LRC	<a href="mailto:ay0552@wayne.edu">ay0552@wayne.edu</a>
Larson	Cathy	PART-TIME FACULTY	Health Care Sciences	Physical Therapy	313-577-1436	2248	<a href="mailto:eb9976@wayne.edu">eb9976@wayne.edu</a>
Lehr	Victoria Tutag	ASSC PROFESSOR-Clinical	Pharmacy Practice	Pharmacy Practice	313-993-7743	4144	<a href="mailto:ai6726@wayne.edu">ai6726@wayne.edu</a>
Li	Jing	POST-DOC FELLOW	Pharmaceutical Sciences	Pharmaceutical Sciences	313-577-6511	na	na
Liu	Bin	RESEARCH ASSC	Pharmaceutical Sciences	Pharmaceutical Sciences	313-577-0815	3437	TBA

# College-wide Alpha Directory

<i>Last Name</i>	<i>First Name</i>	<i>Title</i>	<i>Department</i>	<i>Program</i>	<i>Phone Number</i>	<i>Office Number</i>	<i>Email Address</i>
Liu	Jia	RESEARCH ASST	Pharmaceutical Sciences	Pharmaceutical Sciences	313-993-7665	3520	<a href="mailto:ep7396@wayne.edu">ep7396@wayne.edu</a>
Louis-Ferdinand	Robert T.	PROFESSOR	Pharmaceutical Sciences	Pharmaceutical Sciences	313-577-1715	3122	<a href="mailto:aa1196@wayne.edu">aa1196@wayne.edu</a>
Love-Slater	Valeri R.	INSTR ASST	Health Care Sciences	Physical Therapy	313-577-1432	2221	<a href="mailto:ak7519@wayne.edu">ak7519@wayne.edu</a>
Lowery	LaQuita	BUSSINESS MANAGER	Inst. Of Envir. Health Sciences	Inst. Of Envir. Health Sciences	313-577-6590	5139	<a href="mailto:ah3942@wayne.edu">ah3942@wayne.edu</a>
Lu	Xiangyi	ASSC PROFESSOR	Inst. Of Envir. Health Sciences	Inst. Of Envir. Health Sciences	313-577-5538	5230.1	<a href="mailto:xlu@wayne.edu">xlu@wayne.edu</a>
Lucarotti	Richard	PROFESSOR-Clinical	Pharmacy Practice	Pharmacy Practice	313-577-8741	2122	<a href="mailto:aa2532@wayne.edu">aa2532@wayne.edu</a>
Lysack	Cathy	PROFESSOR	Health Care Sciences	Occupational Therapy	313-577-2297	2202/231 Knapp Bldg	<a href="mailto:c.lysack@wayne.edu">c.lysack@wayne.edu</a>
Malek	Moh	ASSC PROFESSOR	Health Care Sciences	Physical Therapy	313-577-0435	2248	<a href="mailto:en7488@wayne.edu">en7488@wayne.edu</a>
Mangahas	Phil	INSTRUCTOR-NR	Health Care Sciences	Nurse Anesthesia	313-966-0658	2V DRH	<a href="mailto:ad4553@wayne.edu">ad4553@wayne.edu</a>
Martin	Emily T.	ASST PROFESSOR	Pharmacy Practice	Pharmacy Practice	313-577-5932	2136	<a href="mailto:etmartin@wayne.edu">etmartin@wayne.edu</a>
Martinez	Jessica	STUDENT ASST	Pharmacy Practice	Pharmacy Practice	313-993-4115	4341	<a href="mailto:jmartinez@wayne.edu">jmartinez@wayne.edu</a>
Maser	Daniel C.	PART-TIME FACULTY	Health Care Sciences	Occupational Env Health Sci	586-840-3230	na	<a href="mailto:dmaser@askenviroair.com">dmaser@askenviroair.com</a>
Mason	Janather	TECHNICIAN	Pharmaceutical Sciences	Pharmaceutical Sciences	313-577-5415	3610	<a href="mailto:janather_mason@wayne.edu">janather_mason@wayne.edu</a>
Mathieu	Patricia	RESEARCH ASST	Inst. Of Envir. Health Sciences	Inst. Of Envir. Health Sciences	313-577-5505	4230	<a href="mailto:p.mathiew@wayne.edu">p.mathiew@wayne.edu</a>
McGinnity	John G.	ASSC PROFESSOR-Clinical	Health Care Sciences	Physician Assistant Studies	313-577-3707	2532	<a href="mailto:ac8556@wayne.edu">ac8556@wayne.edu</a>
Meier	Carol	ACAD SRV OFF III	Dean's Office	Student and Alumni Affairs	313-577-2320	1635	<a href="mailto:ac3771@wayne.edu">ac3771@wayne.edu</a>
Merkel	Olivia	ASST PROFESSOR	Pharmaceutical Sciences	Pharmaceutical Sciences	313-577-1223/6511	3132	<a href="mailto:olivia.merkel@wayne.edu">olivia.merkel@wayne.edu</a>
Merriwether	James	SECURITY	Dean's Office	WSU Public Safety	313-577-7737	1st Floor Guard Station	<a href="mailto:cp8781@wayne.edu">cp8781@wayne.edu</a>
Miller	Douglas	PROFESSOR-Clinical	Pharmacy Practice	Pharmacy Practice	313-577-6354	2156	<a href="mailto:aa3875@wayne.edu">aa3875@wayne.edu</a>
Milligan	Nancy Vandewiele	ASST PROFESSOR	Health Care Sciences	Occupational Therapy	313-577-5883	2220	<a href="mailto:nancyv-m@wayne.edu">nancyv-m@wayne.edu</a>
Mingela	Sarunas	ASSC PROFESSOR-Clinical	Health Care Sciences	Occupational Envl Health Sci	313-577-1714	5152	<a href="mailto:rsmingela@wayne.edu">rsmingela@wayne.edu</a>
Mohammad	Abdul Khader	RESEARCH ASST	Pharmaceutical Sciences	Pharmaceutical Sciences	313-577-1566	3437	<a href="mailto:du2526@wayne.edu">du2526@wayne.edu</a>
Montante	James	PART-TIME FACULTY	Health Care Sciences	Physical Therapy	313-577-1432	2248	<a href="mailto:ad3543@wayne.edu">ad3543@wayne.edu</a>
Moore	Marilyn	ADMINISTRATIVE ASSISTANT I	Health Care Sciences	Health Care Sciences	313-577-3442	2211	<a href="mailto:ad4844@wayne.edu">ad4844@wayne.edu</a>
Moser	Lynette R.	ASST PROFESSOR-Clinical	Pharmacy Practice	Pharmacy Practice	313-577-0115	4136	<a href="mailto:aa4576@wayne.edu">aa4576@wayne.edu</a>
Moszczyńska	Anna	ASST PROFESSOR	Pharmaceutical Sciences	Pharmaceutical Sciences	313-577-1257	3142/3250	<a href="mailto:amosz@wayne.edu">amosz@wayne.edu</a>
Moul	Andrew F.	INSTR ASST	Health Care Sciences	Physical Therapy	313-577-1432	2221	<a href="mailto:amosz@wayne.edu">amosz@wayne.edu</a>
Nagwekar	Janardan	EMERITUS PROFESSOR	Pharmaceutical Sciences	Pharmaceutical Sciences	313-577-1047	3610	<a href="mailto:aa1359@wayne.edu">aa1359@wayne.edu</a>
Nelson	Lisa	INSTR ASST	Health Care Sciences	Physician Assistant Studies	313-577-4625	2550	<a href="mailto:ao7363@wayne.edu">ao7363@wayne.edu</a>

# College-wide Alpha Directory

<i>Last Name</i>	<i>First Name</i>	<i>Title</i>	<i>Department</i>	<i>Program</i>	<i>Phone Number</i>	<i>Office Number</i>	<i>Email Address</i>
Nettie	Jon	PART-TIME FACULTY	Health Care Sciences	Physical Therapy	313-577-1432	2248	<a href="mailto:bb7679@wayne.edu">bb7679@wayne.edu</a>
Normile	Howard	ASSOCIATE DEAN HEALTH SCIENCES	Dean's Office	Administration	313-577-7597	2627	<a href="mailto:ab4754@wayne.edu">ab4754@wayne.edu</a>
O'Connell	Mary Beth	ASSC PROFESSOR	Pharmacy Practice	Pharmacy Practice	313-993-7620	2148	<a href="mailto:ao4856@wayne.edu">ao4856@wayne.edu</a>
Olejniczak	Carolyn A.	INSTR ASST	Health Care Sciences	Physical Therapy	313-577-1436	2221	<a href="mailto:ap0173@wayne.edu">ap0173@wayne.edu</a>
Ostrowski	Cynthia A.	ASST PROFESSOR-Clinical	Health Care Sciences	Occupational Env Health Sci	313-577-1210	5138	<a href="mailto:dq1462@wayne.edu">dq1462@wayne.edu</a>
Oupicky	David	ASSC PROFESSOR	Pharmaceutical Sciences	Pharmaceutical Sciences	313-993-7669	3138	<a href="mailto:ao4316@wayne.edu">ao4316@wayne.edu</a>
Palazzolo	Katherine	PART-TIME FACULTY	Health Care Sciences	Physical Therapy	313-577-1436	2248	<a href="mailto:katherine_palazzolo@wayne.edu">katherine_palazzolo@wayne.edu</a>
Pang	Haiyan	RESEARCH ASST	Inst. Of Envir. Health Sciences	Inst. Of Envir. Health Sciences	313-577-5571	4240	<a href="mailto:av@5012@wayne.edu">av@5012@wayne.edu</a>
Pant	Asmita	GRADUATE STUDENT	Inst. Of Envir. Health Sciences	Inst. Of Envir. Health Sciences	313-577-6576	5240	<a href="mailto:ei1384@wayne.edu">ei1384@wayne.edu</a>
Pardo	Victoria M.	ASST PROFESSOR-Clinical	Health Care Sciences	Physical Therapy	313-577-9166	2254	<a href="mailto:av6281@wayne.edu">av6281@wayne.edu</a>
Parker Jr	Dennis	ASSC PROFESSOR-Clinical	Pharmacy Practice	Pharmacy Practice	313-577-6152	4141	<a href="mailto:ah2262@wayne.edu">ah2262@wayne.edu</a>
Parnell	Regina N.	ASST PROFESSOR-Clinical	Health Care Sciences	Occupational Therapy	313-577-6794	2208	<a href="mailto:ad9049@wayne.edu">ad9049@wayne.edu</a>
Pattin	Anthony J.	ASST PROFESSOR-Clinical	Pharmacy Practice	Pharmacy Practice	313-993-7465	2124	<a href="mailto:apattin2@wayne.edu">apattin2@wayne.edu</a>
Patzer	Diane E.	INSTR ASST	Health Care Sciences	Physical Therapy	313-577-1436	2221	<a href="mailto:af1672@wayne.edu">af1672@wayne.edu</a>
Paul	Stephen	PART-TIME FACULTY	Health Care Sciences	Occupational Env Health Sci	586-840-3230	na	<a href="mailto:spaul@askenviroair.com">spaul@askenviroair.com</a>
Pawlowski	Robert M.	ASST PROFESSOR-Clinical	Health Care Sciences	Occupational Env Health Sci	313-577-3860	5136	<a href="mailto:ds2688@wayne.edu">ds2688@wayne.edu</a>
Peck	Donald	DIV HEAD/Radiology	Health Care Sciences	Radiologist Asst Studies Prog	313-916-3344	Henry Ford Hosp	<a href="mailto:ap4715@wayne.edu">ap4715@wayne.edu</a>
Pepper	Diane	PART-TIME FACULTY	Fundamental and Applied Sciences	Pathologists' Assistant	313-966-0575	Harper Hosp.	<a href="mailto:ai2603@wayne.edu">ai2603@wayne.edu</a>
Pinelli	Nicole	ASST PROFESSOR-Clinical	Pharmacy Practice	Pharmacy Practice	313-993-7555	2132	<a href="mailto:ah8430@wayne.edu">ah8430@wayne.edu</a>
Pitts	David K.	ASSC PROFESSOR	Pharmaceutical Sciences	Pharmaceutical Sciences	313-577-0819	3124	<a href="mailto:ad3402@wayne.edu">ad3402@wayne.edu</a>
Pociask	Fredrick	ASST PROFESSOR-Clinical	Health Care Sciences	Physical Therapy	313-577-1433	2320	<a href="mailto:ad8585@wayne.edu">ad8585@wayne.edu</a>
Pokorski	Phillip L.	ASST PROFESSOR-Clinical	Health Care Sciences	Physician Asst Studies/Pharm Sci	313-577-0015	2116	<a href="mailto:aa9410@wayne.edu">aa9410@wayne.edu</a>
Porter	William	NUCLEAR MEDICINE	Health Care Sciences	Radiologist Asst Studies Prog	313-916-1696	Henry Ford Hosp	na
VACANT		ADMIN ASST II	Dean's Office	Bus. Affairs	313-577-5409	2602.1	
Pruitt	Sherry	SECRETARY III	Dean's Office	Bus. Affairs/HR	313-577-1708	2604	<a href="mailto:spruitt@wayne.edu">spruitt@wayne.edu</a>
Raglin	Erica	RESEARCH ASST	Inst. Of Envir. Health Sciences	Inst. Of Envir. Health Sciences	313-577-5043	5141	<a href="mailto:ab4083@wayne.edu">ab4083@wayne.edu</a>
Reevers	Shauna	ACAD SRV OFF II	Dean's Office	Student and Alumni Affairs	313-577-8599	1619	<a href="mailto:sreevers@wayne.edu">sreevers@wayne.edu</a>
Reeves	Andrew	EMERITUS PROFESSOR	Health Care Sciences	Occupational Env Health Sci	313-822-4651	na	<a href="mailto:andrew.reeves@wayne.edu">andrew.reeves@wayne.edu</a>

# College-wide Alpha Directory

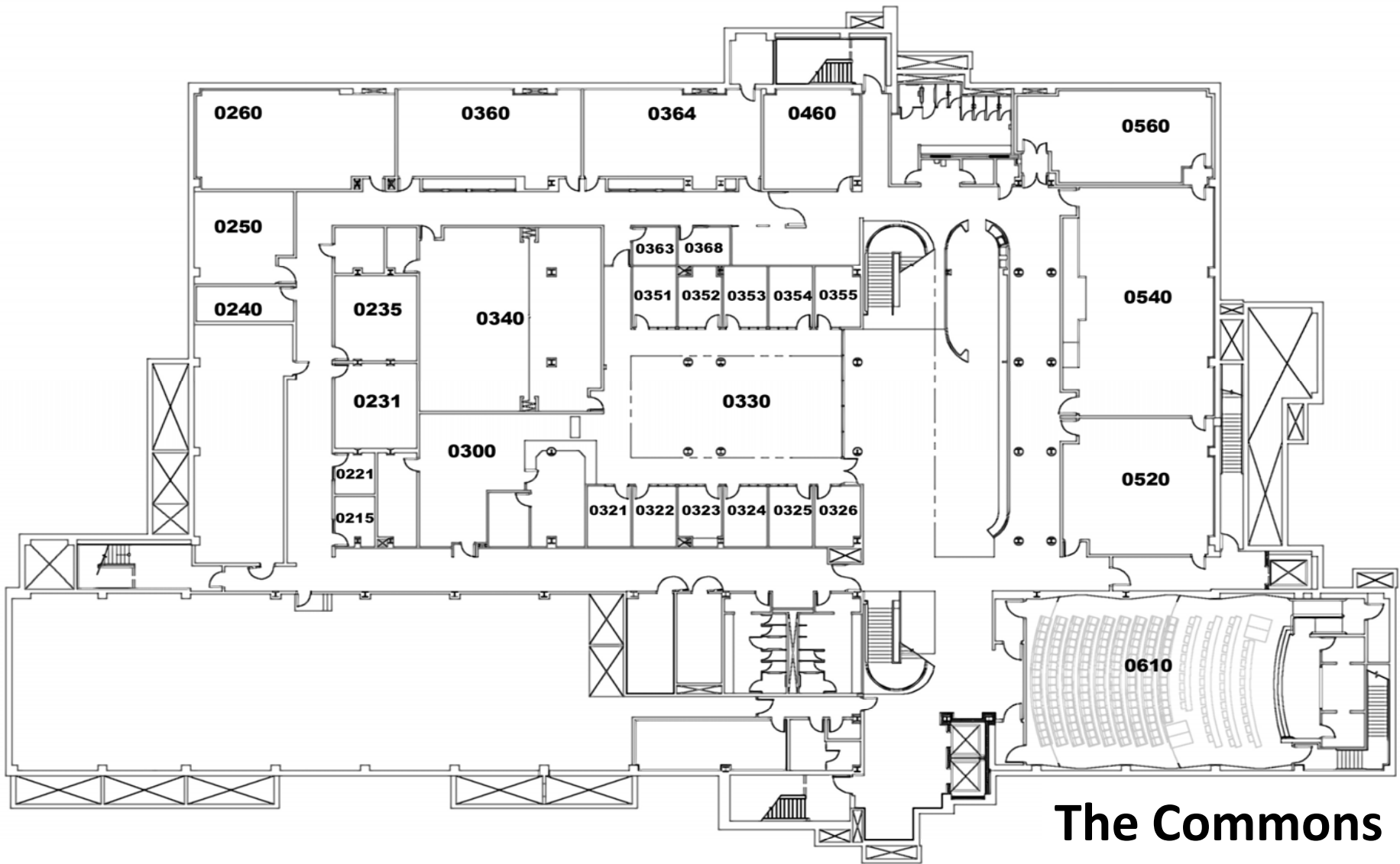
<i>Last Name</i>	<i>First Name</i>	<i>Title</i>	<i>Department</i>	<i>Program</i>	<i>Phone Number</i>	<i>Office Number</i>	<i>Email Address</i>
Reid	Kristina R.	INSTRUCTOR-Clinical	Health Care Sciences	Physical Therapy	313-577-0693	2250	<a href="mailto:ai6795@wayne.edu">ai6795@wayne.edu</a>
Reineke	Joshua	ASST PROFESSOR	Pharmaceutical Sciences	Pharmaceutical Sciences	313-577-3761	3136	<a href="mailto:ea3420@wayne.edu">ea3420@wayne.edu</a>
Reiners	John J.	PROFESSOR	Inst. Of Envir. Health Sciences	Inst. Of Envir. Health Sciences	313-577-5594	4114	<a href="mailto:john.reiners jr@wayne.edu">john.reiners jr@wayne.edu</a>
Reinheimer	Karrin	RESEARCH ASST	Inst. Of Envir. Health Sciences	Inst. Of Envir. Health Sciences	313-577-5628	5141	<a href="mailto:ey1717@wayne.edu">ey1717@wayne.edu</a>
Reynolds	Charlyce	ADMINISTRATIVE ASSISTANT	Fundamental and Applied Sciences	Fundamental and Applied Sciences	313-577-0952	MS/5439 W	<a href="mailto:clreynolds@wayne.edu">clreynolds@wayne.edu</a>
Rivers	Cheryl	SECRETARY III	Dean's Office	Development	313-577-6478	2221	<a href="mailto:crivers@wayne.edu">crivers@wayne.edu</a>
Roberts, III	George	POST-DOC FELLOW	Pharmaceutical Sciences	Pharmaceutical Sciences	313-577-0815	3437	<a href="mailto:ai5214@wayne.edu">ai5214@wayne.edu</a>
Rosenberger	Erika	PROCUREMENT SPECIALIST	DLAR	DLAR	313-577-1107	5116	<a href="mailto:eg4791@wayne.edu">eg4791@wayne.edu</a>
Ruden	Douglas	ASSC PROFESSOR	Inst. Of Envir. Health Sciences	Inst. Of Envir. Health Sciences	313-577-5614	2 CS Mott Ctr	<a href="mailto:douglasr@wayne.edu">douglasr@wayne.edu</a>
Ruemenapp	Tammy	SPECIALIST VETERINARY TECH	DLAR	DLAR	313-577-1156	517	<a href="mailto:truemenapp@wayne.edu">truemenapp@wayne.edu</a>
Runge-Morris	Melissa	INTERIM-DIRECTOR	Inst. Of Envir. Health Sciences	Inst. Of Envir. Health Sciences	313-577-5598	4118	<a href="mailto:m.runge-morris@wayne.edu">m.runge-morris@wayne.edu</a>
Rybak	Michael	PROFESSOR	Pharmacy Practice	Pharmacy Practice	313-577-4376	4148	<a href="mailto:aa1592@wayne.edu">aa1592@wayne.edu</a>
Salinitri	Francine	ASST PROFESSOR-Clinical	Pharmacy Practice	Pharmacy Practice	313-577-0453	4127	<a href="mailto:ag8762@wayne.edu">ag8762@wayne.edu</a>
Samuel	Preethy	ASST PROFESSOR	Health Care Sciences	Health Care Sciences	313-577-5880	2210	<a href="mailto:preethy@wayne.edu">preethy@wayne.edu</a>
Samuels	Tamra	PROGRAM SPECIALIST	Pharmacy Practice	Pharmacy Practice	313-993-6823	2190	<a href="mailto:t_samuels@wayne.edu">t_samuels@wayne.edu</a>
Sanders	William	VICE CHAIR, Radiology	Health Care Sciences	Radiologist Asst Studies Prog	313-916-4488	Henry Ford Hosp	na
Sandlin	Heather	ACAD SRV OFF II - HEATLH SCIENCES	Dean's Office	Administration	313-577-5523	2612	<a href="mailto:au5979@wayne.edu">au5979@wayne.edu</a>
Santra	Soumava	POST-DOC FELLOW	Pharmaceutical Sciences	Pharmaceutical Sciences	313-577-0280	3610	<a href="mailto:al7318@wayne.edu">al7318@wayne.edu</a>
Savich	Tatjana Tina	PART-TIME FACULTY	Health Care Sciences	Occupational Therapy	313-577-1435	2207	<a href="mailto:ttsavich@wayne.edu">ttsavich@wayne.edu</a>
Schellhaass-Kraus	Heike	PART-TIME FACULTY	Health Care Sciences	Physical Therapy	313-577-1432	2248	<a href="mailto:dx6872@wayne.edu">dx6872@wayne.edu</a>
Schenk	Thomas	PART-TIME FACULTY	Health Care Sciences	Occupational Env Health Sci	313-577-1369	na	na
Schiavi	Paul	ASST PROFESSOR	Pharmacy Practice	Pharmacy Practice	313-993-7517	2128	<a href="mailto:at7833@wayne.edu">at7833@wayne.edu</a>
Schiller	Martha	ASST PROFESSOR-Clinical	Health Care Sciences	Physical Therapy	313-577-1724	2250	<a href="mailto:aa1712@wayne.edu">aa1712@wayne.edu</a>
Schmeltz	Susan	ASST PROFESSOR-Clinical	Health Care Sciences	Physician Assistant Studies	313-577-7661	2542	<a href="mailto:eg5862@wayne.edu">eg5862@wayne.edu</a>
Schueler	Caterina	SECRETARY III	Health Care Sciences	Health Care Sciences	313-577-1436	2248	<a href="mailto:caterina.schueler@wayne.edu">caterina.schueler@wayne.edu</a>
Sen	Arko	GRADUATE STUDENT	Inst. Of Envir. Health Sciences	Inst. Of Envir. Health Sciences	313-577-6545	2105 Scott Hall	<a href="mailto:es3195@wayne.edu">es3195@wayne.edu</a>
Separovic	Duska	ASSC PROFESSOR-Research	Pharmaceutical Sciences	Pharmaceutical Sciences	313-577-8065	3144	<a href="mailto:ai7063@wayne.edu">ai7063@wayne.edu</a>
Sharma	Shiv	RESEARCH ASSC	Pharmaceutical Sciences	Pharmaceutical Sciences	313-577-5808	3610	<a href="mailto:eb4868@wayne.edu">eb4868@wayne.edu</a>
Sherlitz	Trina	PART-TIME FACULTY	Fundamental and Applied Sciences	Pathologists' Assistant	313-577-2050	MS/5439 W	<a href="mailto:ak6899@wayne.edu">ak6899@wayne.edu</a>

# College-wide Alpha Directory

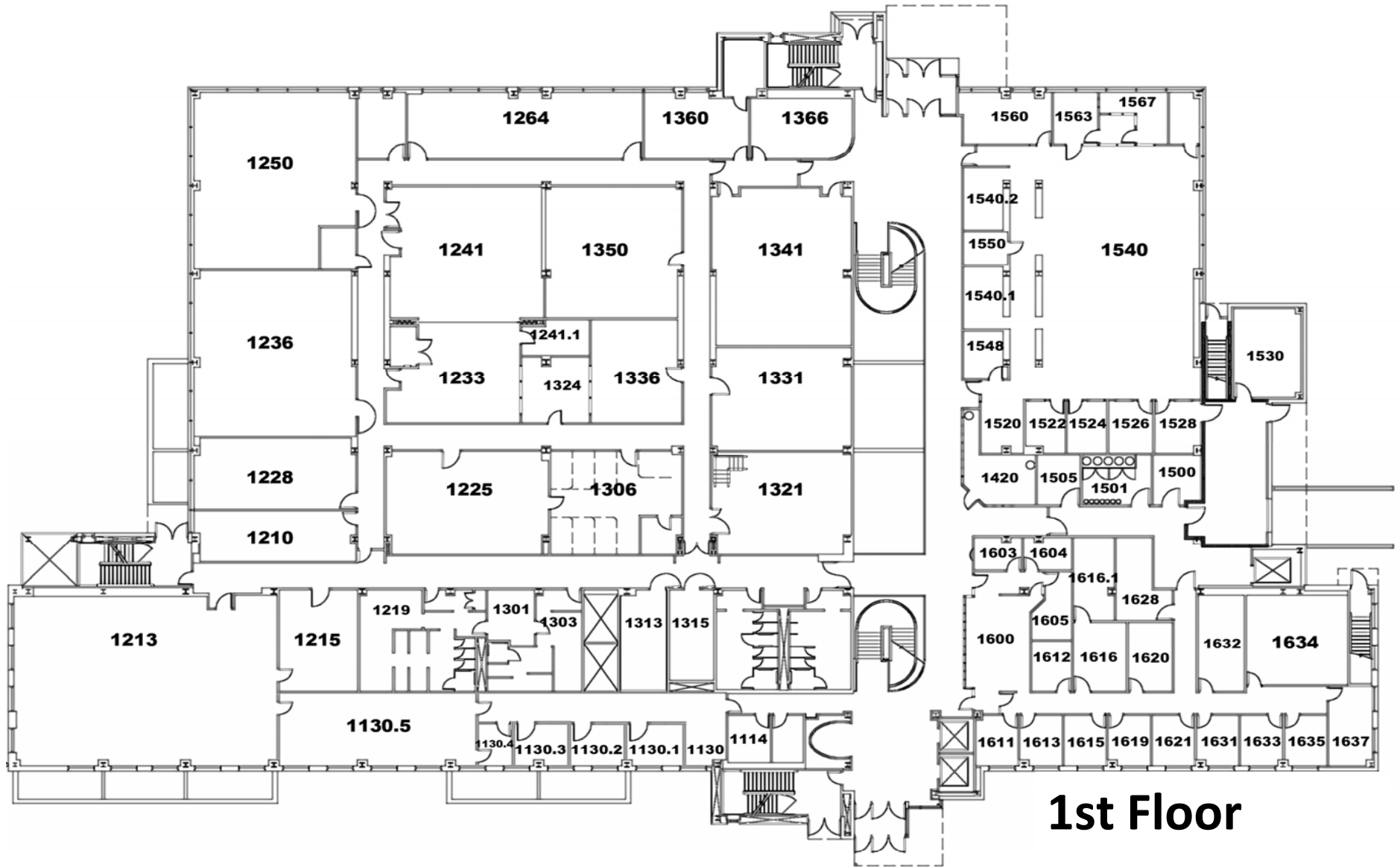
<i>Last Name</i>	<i>First Name</i>	<i>Title</i>	<i>Department</i>	<i>Program</i>	<i>Phone Number</i>	<i>Office Number</i>	<i>Email Address</i>
Shin	Nahmee	RESEARCH ASST	Inst. Of Envir. Health Sciences	Inst. Of Envir. Health Sciences	313-577-6546	2105 Scott Hall	<a href="mailto:av3631@wayne.edu">av3631@wayne.edu</a>
Shukkur	Muhammed	RESEARCH ASST	Pharmacy Practice	Pharmacy Practice	313-577-5851	4320	<a href="mailto:eg7046@wayne.edu">eg7046@wayne.edu</a>
Siddique	Mohamed	MEDICAL DIRECTOR	Health Care Sciences	Physician Assistant Studies	313-577-1368	2590	<a href="mailto:aa1446@wayne.edu">aa1446@wayne.edu</a>
Slaughter	Richard	ASSOCIATE DEAN/Interim Chair/PPR	Dean's Office	Administration	313-577-8502	2629	<a href="mailto:aa4063@wayne.edu">aa4063@wayne.edu</a>
Smith	Gerallynn	PART-TIME FACULTY	Pharmacy Practice	Pharmacy Practice	313-577-5401 313-577-5384	2142	<a href="mailto:aa2242@wayne.edu">aa2242@wayne.edu</a>
Smythe	Maureen	PROFESSOR-Clinical	Pharmacy Practice	Pharmacy Practice	248-898-4069	4126	<a href="mailto:ac8418@wayne.edu">ac8418@wayne.edu</a>
Sojda	Brett	PART-TIME FACULTY	Fundamental and Applied Sciences	Post-Bach Cert in Forensic Inv	313-577-2050	MS/5439 W	<a href="mailto:ai9072@wayne.edu">ai9072@wayne.edu</a>
Spitz	Daniel	ADJUNCT FACULTY	Fundamental and Applied Sciences	Post-Bach Cert in Forensic Inv	313-577-2050	MS/5439 W	<a href="mailto:danspitz@aol.com">danspitz@aol.com</a>
Srinivasan	Mahaleakshmi	PART-TIME FACULTY	Health Care Sciences	Occupational Env Health Sci	313-577-0019	5425 Woodward, 300	<a href="mailto:msriniva@wayne.edu">msriniva@wayne.edu</a>
Stemmer	Paul	ASSC PROFESSOR	Inst. Of Envir. Health Sciences	Inst. Of Envir. Health Sciences	313-577-6536	2105 Scott Hall	<a href="mailto:ak5245@wayne.edu">ak5245@wayne.edu</a>
Stemmer	Paul M.	ASSC PROFESSOR	Pharmaceutical Sciences	Pharmaceutical Sciences	313-577-6536	IEHS	<a href="mailto:pmstemmer@wayne.edu">pmstemmer@wayne.edu</a>
Sturza	Scott	RADIOLOGIST	Health Care Sciences	Radiologist Asst Studies Prog	313-916-1363	Henry Ford Hosp	<a href="mailto:ssturza@wayne.edu">ssturza@wayne.edu</a>
Stutrud	Carol Bugdalski	SENIOR LECTURER	Pharmacy Practice	Pharmacy Practice	313-577-5405	2150	<a href="mailto:carolb@wayne.edu">carolb@wayne.edu</a>
Swift	Aaron	SYSTEMS ADMINISTRATOR II	Dean's Office	Information Technology	313-993-4607	4615	<a href="mailto:ah9091@wayne.edu">ah9091@wayne.edu</a>
Taffe	Bonita	ASSISTANT/Non-Instr	Fundamental and Applied Sciences	Forensic Investigation	313-577-2050	MS/5439 W	<a href="mailto:aa1009@wayne.edu">aa1009@wayne.edu</a>
Talley	Susan	DIRECTOR	Health Care Sciences	Physical Therapy	313-577-4643	2246	<a href="mailto:ac1563@wayne.edu">ac1563@wayne.edu</a>
Taylor	Thomas N.	ASSC PROFESSOR	Pharmacy Practice	Pharmacy Practice	313-577-5404	2138	<a href="mailto:ec2942@wayne.edu">ec2942@wayne.edu</a>
Thiel	Douglas	PART-TIME FACULTY	Health Care Sciences	Occupational Envl Health Sci	734-324-6208	na	<a href="mailto:df5069@wayne.edu">df5069@wayne.edu</a>
Thomas	Geneice	RESEARCH ASST	Inst. Of Envir. Health Sciences	Inst. Of Envir. Health Sciences	313-577-5618	5333	<a href="mailto:av4196@wayne.edu">av4196@wayne.edu</a>
Tinsley	Stanley	SECURITY	Dean's Office	WSU Public Safety	313-577-7737	Guard Station	<a href="mailto:ew9745@wayne.edu">ew9745@wayne.edu</a>
Tolin	Liyongo	PART-TIME FACULTY	Health Care Sciences	Physical Therapy	313-577-1432	2248	<a href="mailto:ad4082@wayne.edu">ad4082@wayne.edu</a>
Tomasovitch	David	ADMINISTRATIVE ASST	Pharmacy Practice	Pharmacy Practice	313-577-5859	2154	<a href="mailto:cu9410@wayne.edu">cu9410@wayne.edu</a>
Tracy-Bee	Mary	PART-TIME FACULTY	Fundamental and Applied Sciences	Pathologists' Assistant	313-577-2050	MS/5439 W	<a href="mailto:tracyma@udmercy.edu">tracyma@udmercy.edu</a>
Upshaw	Eric	PROG RECORDS CLK SR	Dean's Office	Administration	313-993-6624	2620	<a href="mailto:af8230@wayne.edu">af8230@wayne.edu</a>
VACANT	Vacant	PROFESSIONAL TECH	Dean's Office	Information Technology	313-577-1230	4617	
Vivian	Jesse	PROFESSOR	Pharmacy Practice	Pharmacy Practice	313-577-5389	2144	<a href="mailto:ac6027@wayne.edu">ac6027@wayne.edu</a>
Wabeke	Roger	PART-TIME FACULTY	Health Care Sciences	Occupational Env Health Sci	313-577-6866	na	<a href="mailto:wabeker@wayne.edu">wabeker@wayne.edu</a>
Walczyk	Mary	INSTRUCTOR-NR	Health Care Sciences	Nurse Anesthesia	313-993-7824	2V DRH	<a href="mailto:ac6415@wayne.edu">ac6415@wayne.edu</a>
Walowicz	Linda	SR VETERINARY TECH	DLAR	DLAR	313-993-4005	5605	<a href="mailto:l.walowicz@wayne.edu">l.walowicz@wayne.edu</a>

# College-wide Alpha Directory

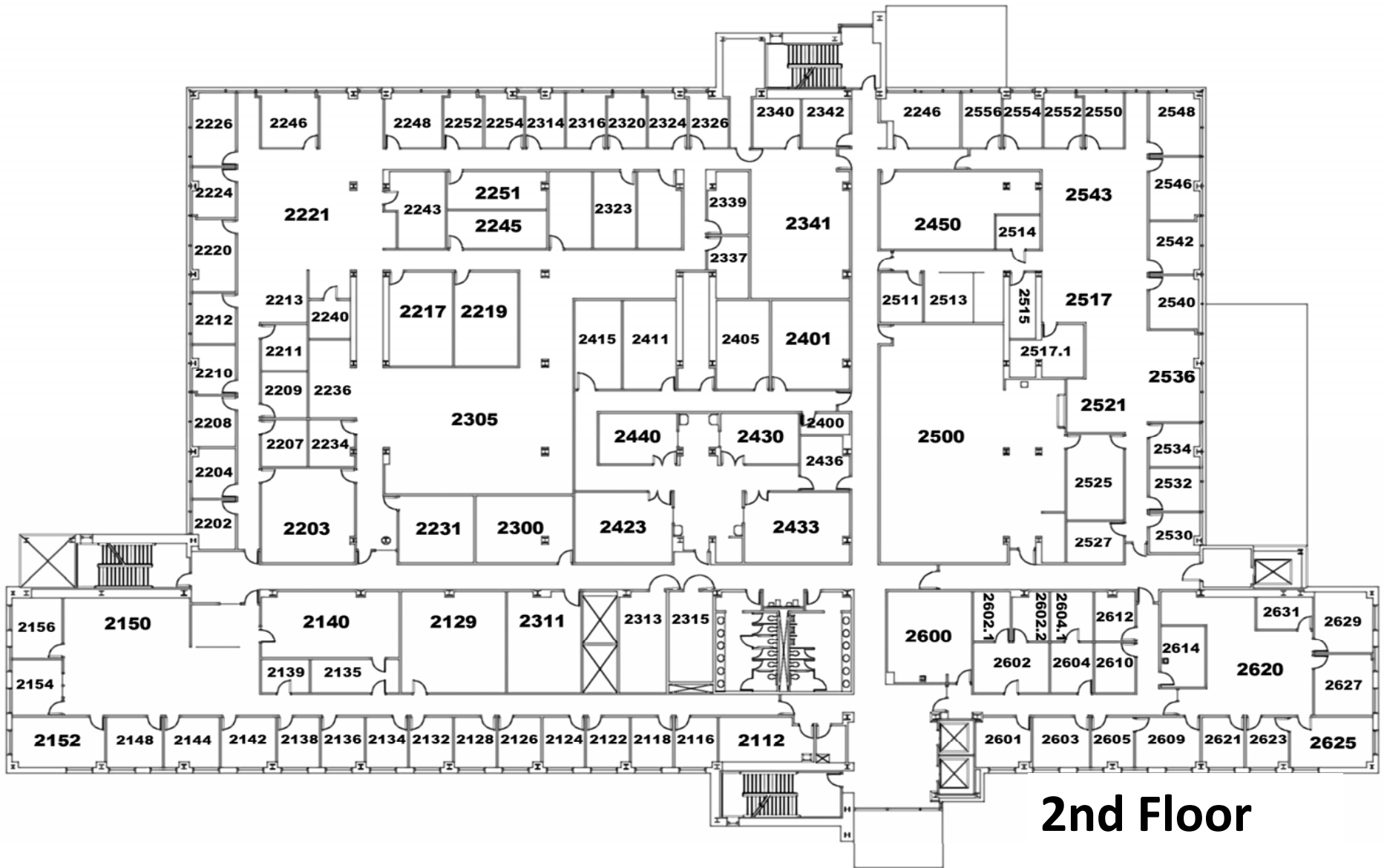
<i>Last Name</i>	<i>First Name</i>	<i>Title</i>	<i>Department</i>	<i>Program</i>	<i>Phone Number</i>	<i>Office Number</i>	<i>Email Address</i>
Walters	Gwen	PART-TIME FACULTY	Health Care Sciences	Physical Therapy	313-577-1432	2248	<a href="mailto:ey7960@wayne.edu">ey7960@wayne.edu</a>
Wang	Luan	GRADUATE STUDENT	Inst. Of Envir. Health Sciences	Inst. Of Envir. Health Sciences	313-577-5614	8 CS Mott Ctr	<a href="mailto:du1484@wayne.edu">du1484@wayne.edu</a>
Wang	Gan	ASSC PROFESSOR	Inst. Of Envir. Health Sciences	Inst. Of Envir. Health Sciences	313-577-5583	4514	<a href="mailto:g.wang@wayne.edu">g.wang@wayne.edu</a>
Wani	Amit	POST-DOC FELLOW	Pharmaceutical Sciences	Pharmaceutical Sciences	313-577-6511	na	<a href="mailto:amitwani@wayne.edu">amitwani@wayne.edu</a>
Warner	Peter	ADJ FACULTY	Health Care Sciences	Occupational Envl Health Sci	313-993-6949	5134	<a href="mailto:aa4631@wayne.edu">aa4631@wayne.edu</a>
Watt	Tamra	ACAD SRV OFFICER II - PHARMACY	Dean's Office	Pharmacy Practice	313-577-4928	2610	<a href="mailto:eg6527@wayne.edu">eg6527@wayne.edu</a>
Watt	William D.	ASSOC PROFESSOR-Clinical	Health Care Sciences	Occupational Env Health Sci	313-577-4475	5144	<a href="mailto:ab5746@wayne.edu">ab5746@wayne.edu</a>
Werth	Brian	POST-DOC FELLOW	Pharmacy Practice	Pharmacy Practice	313-577-5381	4131	<a href="mailto:et1598@wayne.edu">et1598@wayne.edu</a>
Wilhelm	Shelia M.	ASST PROFESSOR-Clinical	Pharmacy Practice	Pharmacy Practice	313-993-7671	4134	<a href="mailto:av2238@wayne.edu">av2238@wayne.edu</a>
Wilk	Robert	PART-TIME FACULTY	Fundamental and Applied Sciences	Mortuary Science	313-577-2050	MS/5439 W	<a href="mailto:wilkraw@gmail.com">wilkraw@gmail.com</a>
Will	Robert	PART-TIME FACULTY	Fundamental and Applied Sciences	Mortuary Science	313-577-2050	MS/5432 W	<a href="mailto:ae5345@wayne.edu">ae5345@wayne.edu</a>
Williams	Valerie	PROCUREMENT SPECIALIST	DLAR	DLAR	313-577-1107	5116	<a href="mailto:vwilla@wayne.edu">vwilla@wayne.edu</a>
Williams	Kaprice	ACAD SRV OFF I	Dean's Office	Student & Alumni Affairs	313-577-8715	1621	<a href="mailto:kaprice@wayne.edu">kaprice@wayne.edu</a>
Wilson	Christopher	PART-TIME FACULTY	Health Care Sciences	Physical Therapy	313-577-1432	2248	<a href="mailto:ei9435@wayne.edu">ei9435@wayne.edu</a>
Wimmer	Michael	PART-TIME FACULTY	Health Care Sciences	Physician Assistant Studies	313-577-1368	2590	<a href="mailto:ac6046@wayne.edu">ac6046@wayne.edu</a>
Wittenberg	Brian	ASSC DIRECTOR	Dean's Office	Bus. Affairs/HR	313-577-5413	2603	<a href="mailto:eu0615@wayne.edu">eu0615@wayne.edu</a>
Wormser	Henry C.	PROFESSOR	Pharmaceutical Sciences	Pharmaceutical Sciences	313-993-4244	3605	<a href="mailto:aa2241@wayne.edu">aa2241@wayne.edu</a>
Worth	Prudentia	DIRECTOR/ASST PROFESSOR-Clinical	Health Care Sciences	Nurse Anesthesia	313-993-7168	4605	<a href="mailto:aa1635@wayne.edu">aa1635@wayne.edu</a>



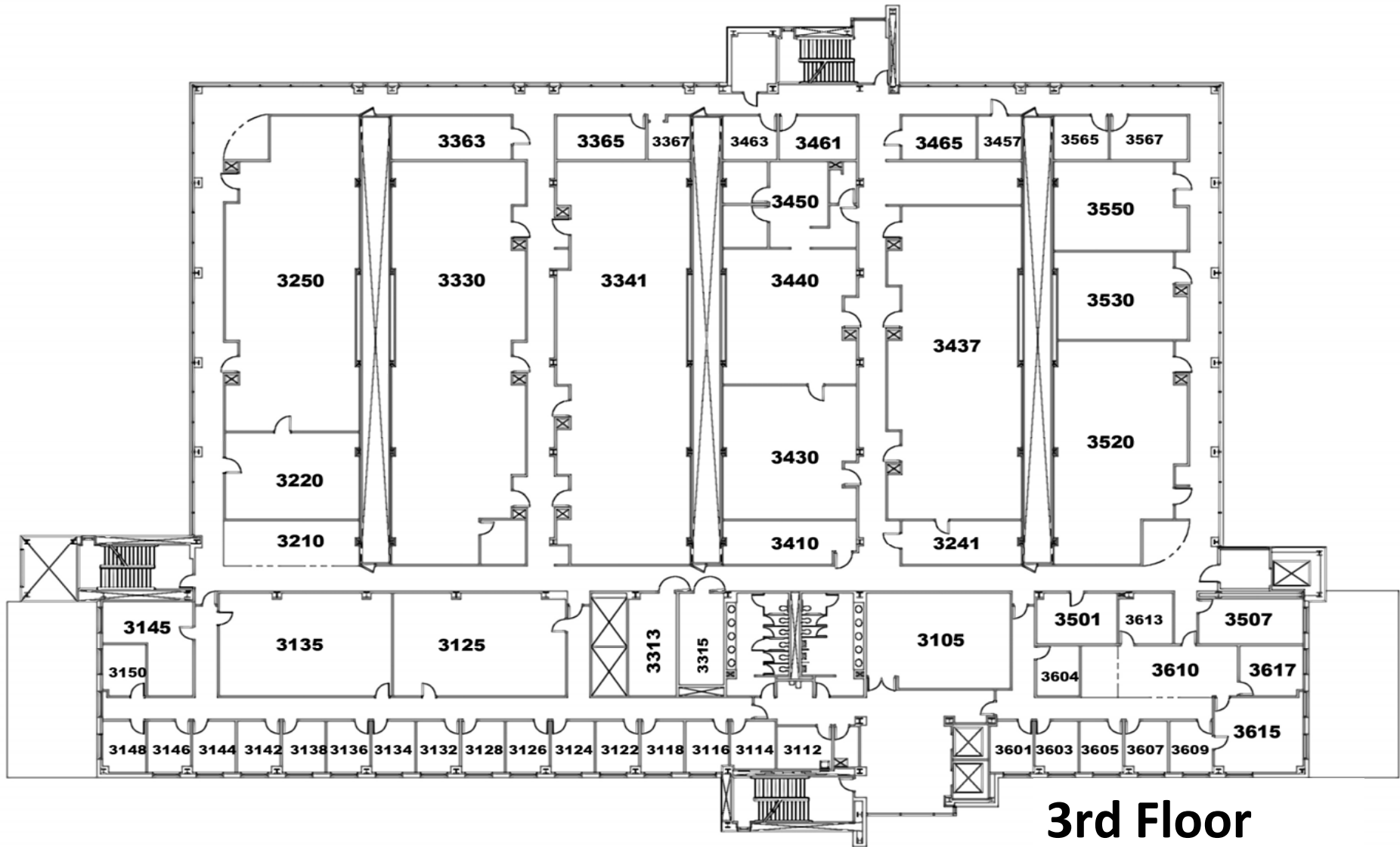
# The Commons



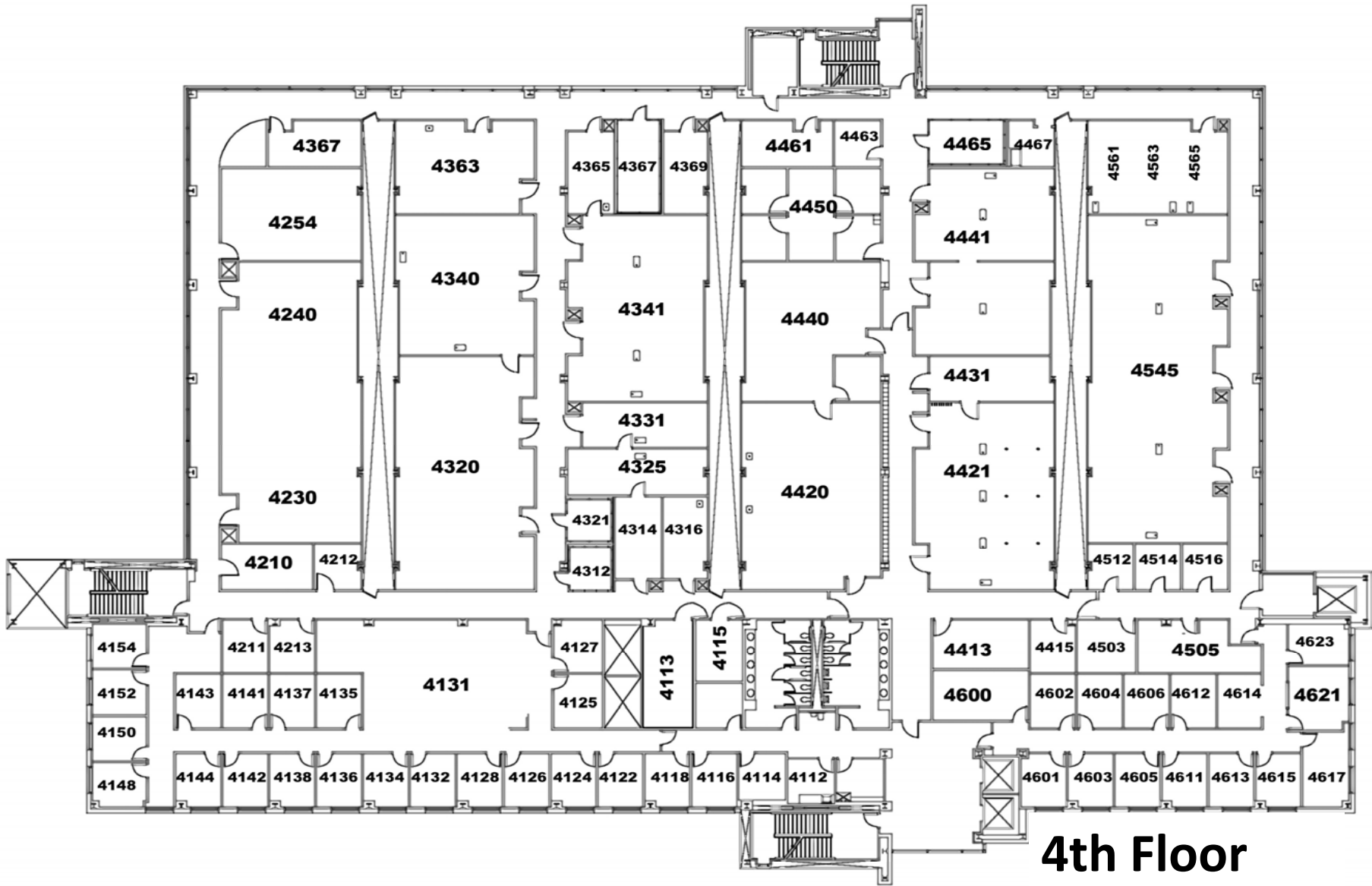
**1st Floor**



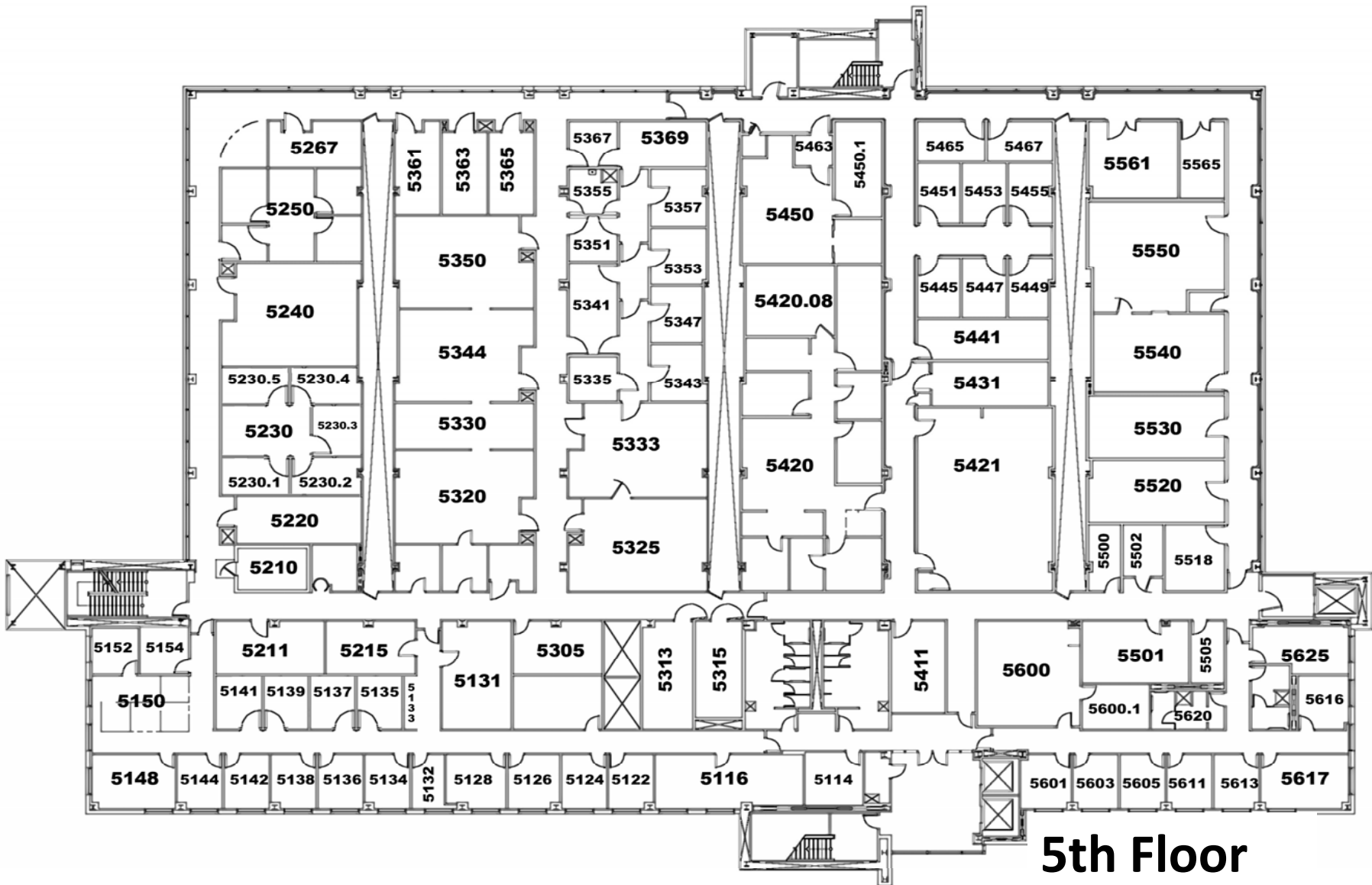
**2nd Floor**



**3rd Floor**



## 4th Floor



# 5th Floor